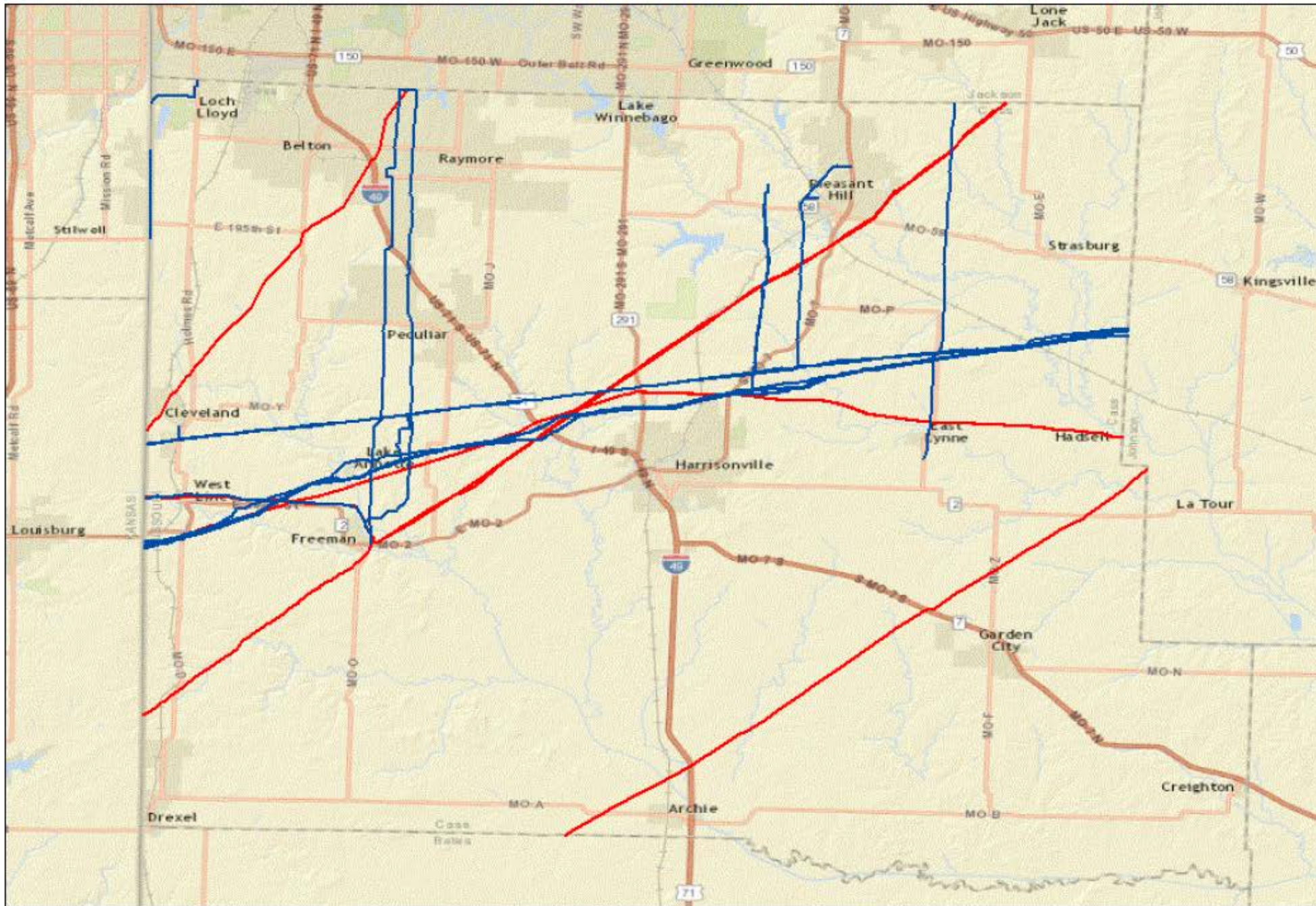




NATIONAL PIPELINE MAPPING SYSTEM



- Legend**
- Gas Transmission Pipelines
 - Hazardous Liquid Pipelines

**Cass County
Missouri
Pipeline Map**



Pipelines depicted on this map represent gas transmission and hazardous liquid lines only. Gas gathering and gas distribution systems are not represented.

This map should never be used as a substitute for contacting a one-call center prior to excavation activities. Please call 811 before any digging occurs.

Questions regarding this map or its contents can be directed to npms-nr@mbakercorp.com.

Projection: Geographic

Datum: NAD83

Map produced by the NPMS Public Viewer at www.npms.phmsa.dot.gov

Date Printed: Sep 09, 2015





NATIONAL PIPELINE MAPPING SYSTEM



Legend

- Gas Transmission Pipelines
- Hazardous Liquid Pipelines

**Clay County
Missouri
Pipeline Map**



Pipelines depicted on this map represent gas transmission and hazardous liquid lines only. Gas gathering and gas distribution systems are not represented.

This map should never be used as a substitute for contacting a one-call center prior to excavation activities. Please call 811 before any digging occurs.

Questions regarding this map or its contents can be directed to npms-nr@mbakercorp.com.

Projection: Geographic

Datum: NAD83

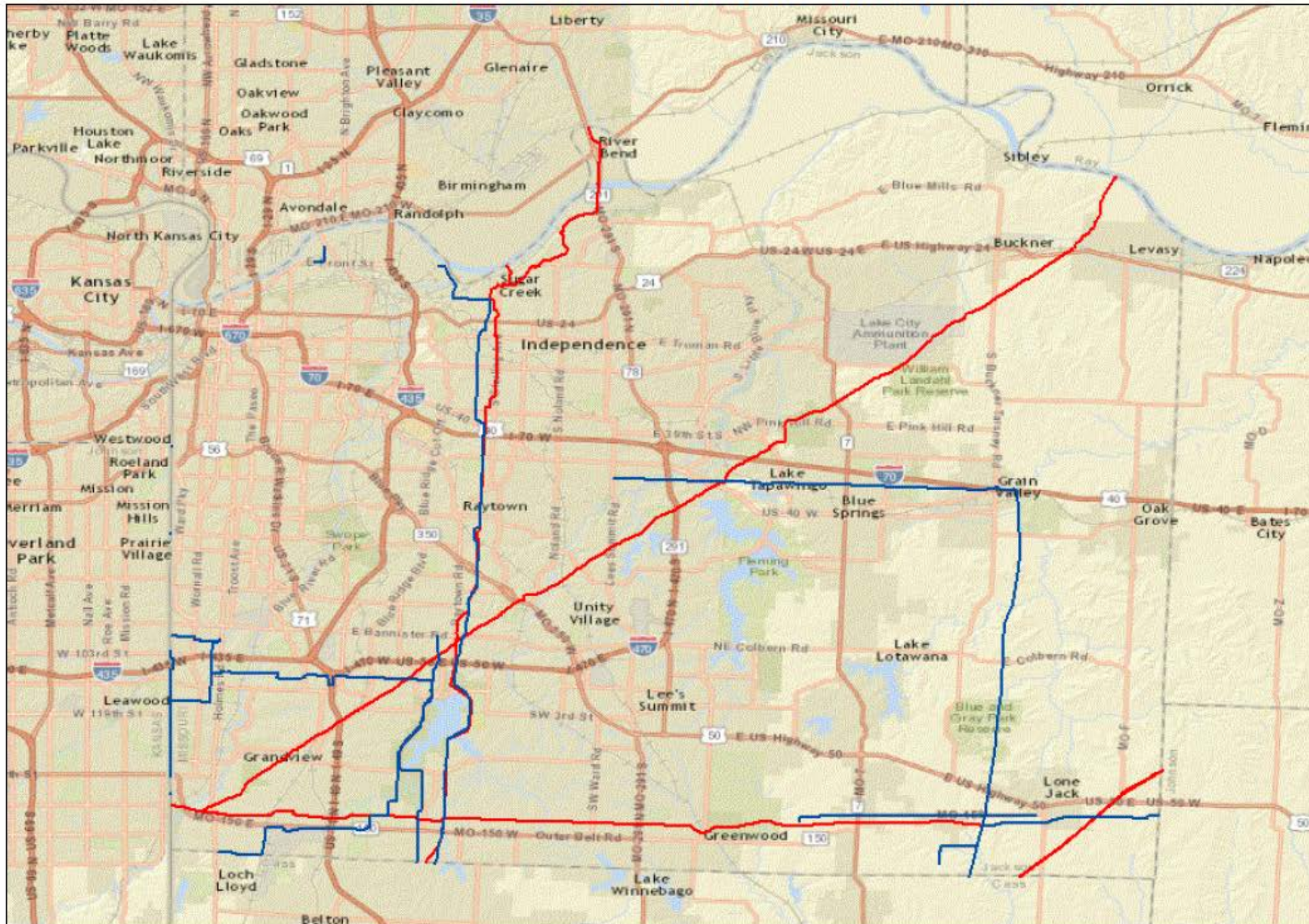
Map produced by the NPMS Public Viewer at www.npms.phmsa.dot.gov

Date Printed: May 05, 2015





NATIONAL PIPELINE MAPPING SYSTEM



Legend

- Gas Transmission Pipelines
- Hazardous Liquid Pipelines

**Jackson County
Missouri
Pipeline Map**

0 20 Miles

Pipelines depicted on this map represent gas transmission and hazardous liquid lines only. Gas gathering and gas distribution systems are not represented.

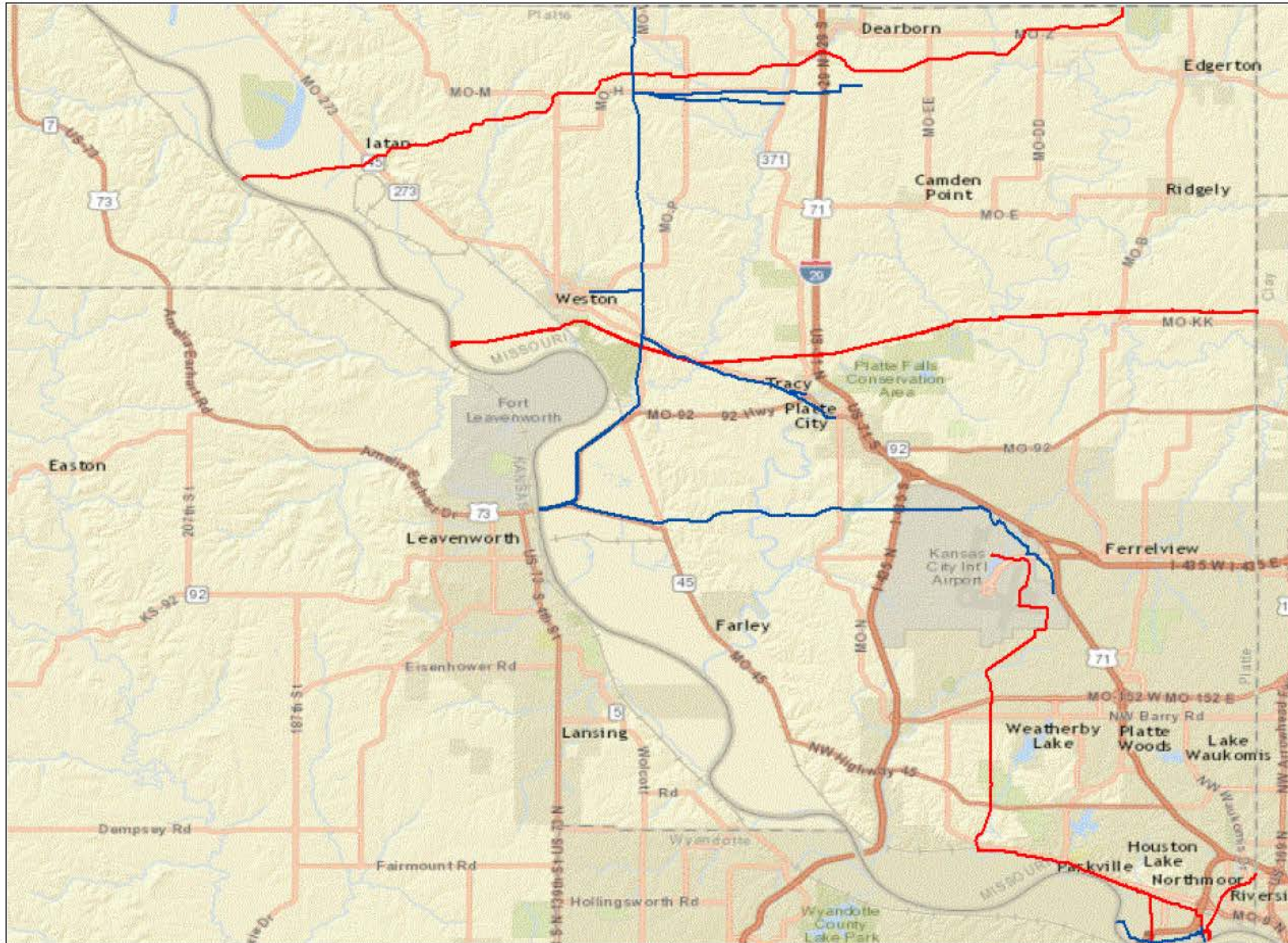
This map should never be used as a substitute for contacting a one-call center prior to excavation activities. Please call 811 before any digging occurs.

Questions regarding this map or its contents can be directed to npms-nr@mbakercorp.com.

Projection: Geographic
Datum: NAD83
Map produced by the NPMS Public Viewer at www.npms.phmsa.dot.gov
Date Printed: Sep 09, 2015



NATIONAL PIPELINE MAPPING SYSTEM



- Legend**
- Gas Transmission Pipelines
 - Hazardous Liquid Pipelines

**Platte County
Missouri
Pipeline Map**



Pipelines depicted on this map represent gas transmission and hazardous liquid lines only. Gas gathering and gas distribution systems are not represented.

This map should never be used as a substitute for contacting a one-call center prior to excavation activities. Please call 811 before any digging occurs.

Questions regarding this map or its contents can be directed to npms-nr@mbakercorp.com.

Projection: Geographic

Datum: NAD83

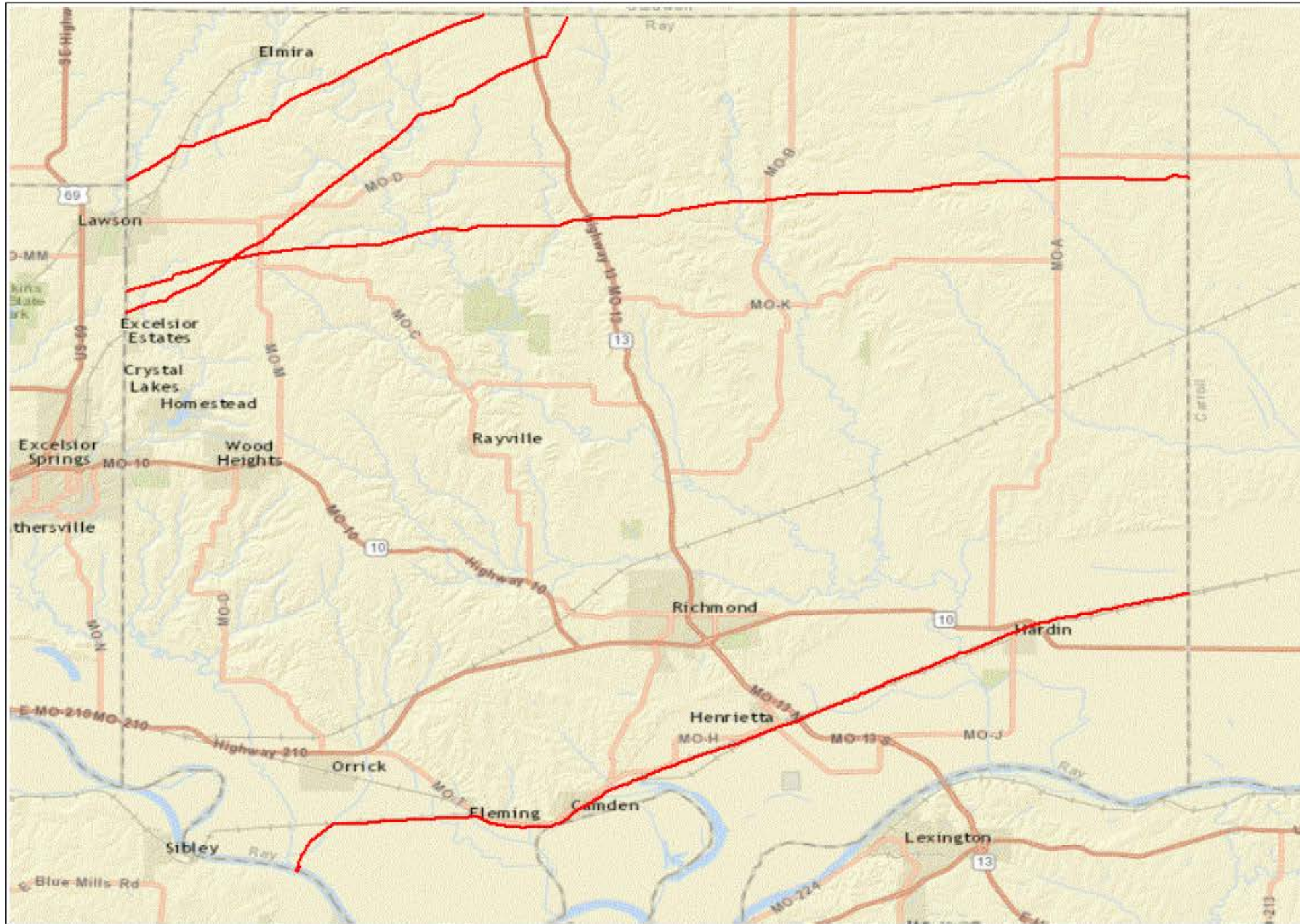
Map produced by the NPMS Public Viewer at www.npms.phmsa.dot.gov

Date Printed: May 05, 2015





NATIONAL PIPELINE MAPPING SYSTEM



Legend

- Gas Transmission Pipelines
- Hazardous Liquid Pipelines

**Ray County
Missouri
Pipeline Map**

0 2.0 Miles



Pipelines depicted on this map represent gas transmission and hazardous liquid lines only. Gas gathering and gas distribution systems are not represented.

This map should never be used as a substitute for contacting a one-call center prior to excavation activities. Please call 811 before any digging occurs.

Questions regarding this map or its contents can be directed to npms-nr@mbakercorp.com.

Projection: Geographic

Datum: NAD83

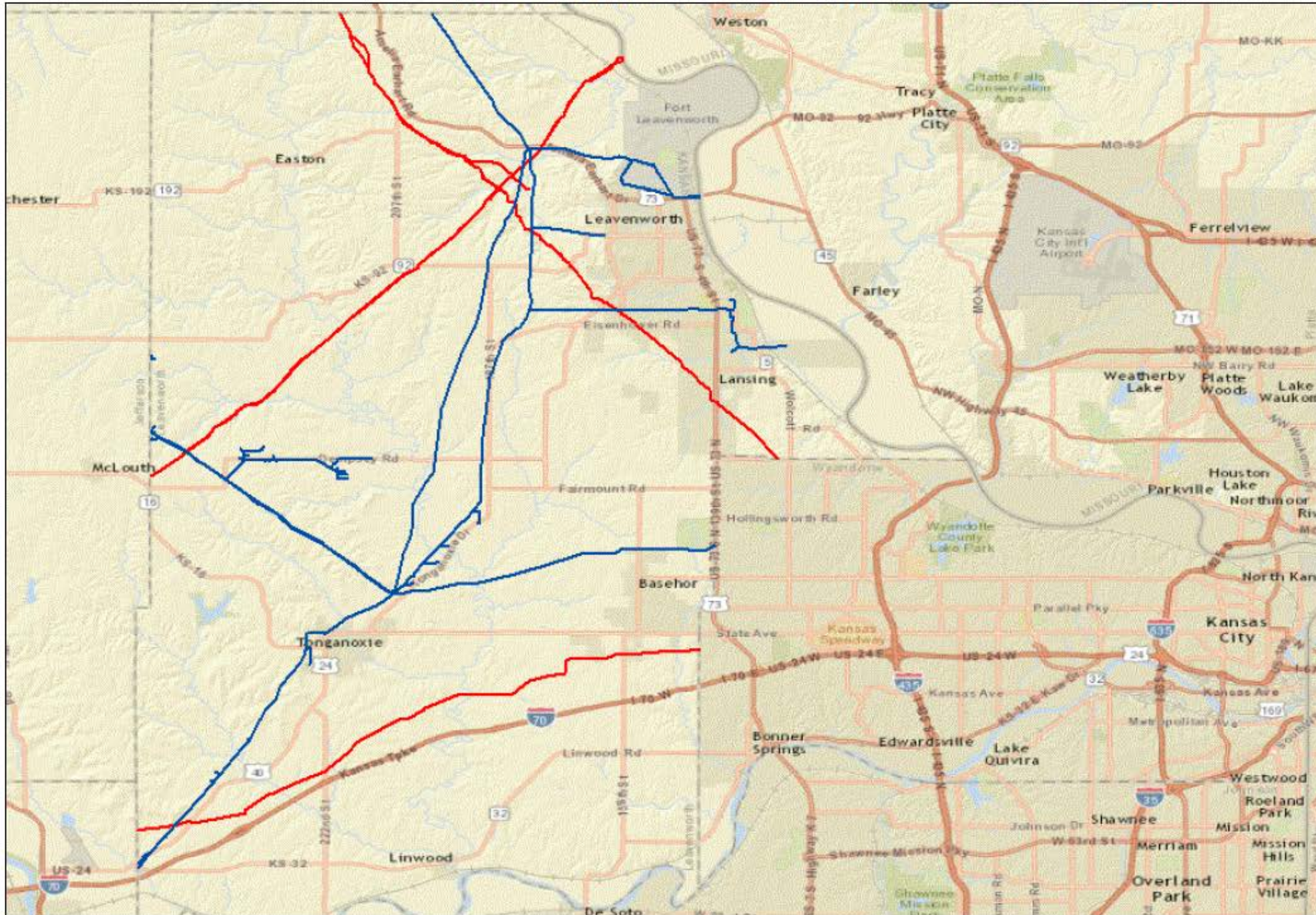
Map produced by the NPMS Public Viewer at www.npms.phmsa.dot.gov

Date Printed: May 05, 2015





NATIONAL PIPELINE MAPPING SYSTEM



- Legend**
- Gas Transmission Pipelines
 - Hazardous Liquid Pipelines

**Leavenworth County
Kansas
Pipeline Map**



Pipelines depicted on this map represent gas transmission and hazardous liquid lines only. Gas gathering and gas distribution systems are not represented.

This map should never be used as a substitute for contacting a one-call center prior to excavation activities. Please call 811 before any digging occurs.

Questions regarding this map or its contents can be directed to npms-nr@mbakercorp.com.

Projection: Geographic

Datum: NAD83

Map produced by the NPMS Public Viewer at www.npms.phmsa.dot.gov

Date Printed: Sep 09, 2015





NATIONAL PIPELINE MAPPING SYSTEM



- Legend**
- Gas Transmission Pipelines
 - Hazardous Liquid Pipelines

**Johnson County
Kansas
Pipeline Map**



Pipelines depicted on this map represent gas transmission and hazardous liquid lines only. Gas gathering and gas distribution systems are not represented.

This map should never be used as a substitute for contacting a one-call center prior to excavation activities. Please call 811 before any digging occurs.

Questions regarding this map or its contents can be directed to npms-nr@mbakercorp.com.

Projection: Geographic

Datum: NAD83

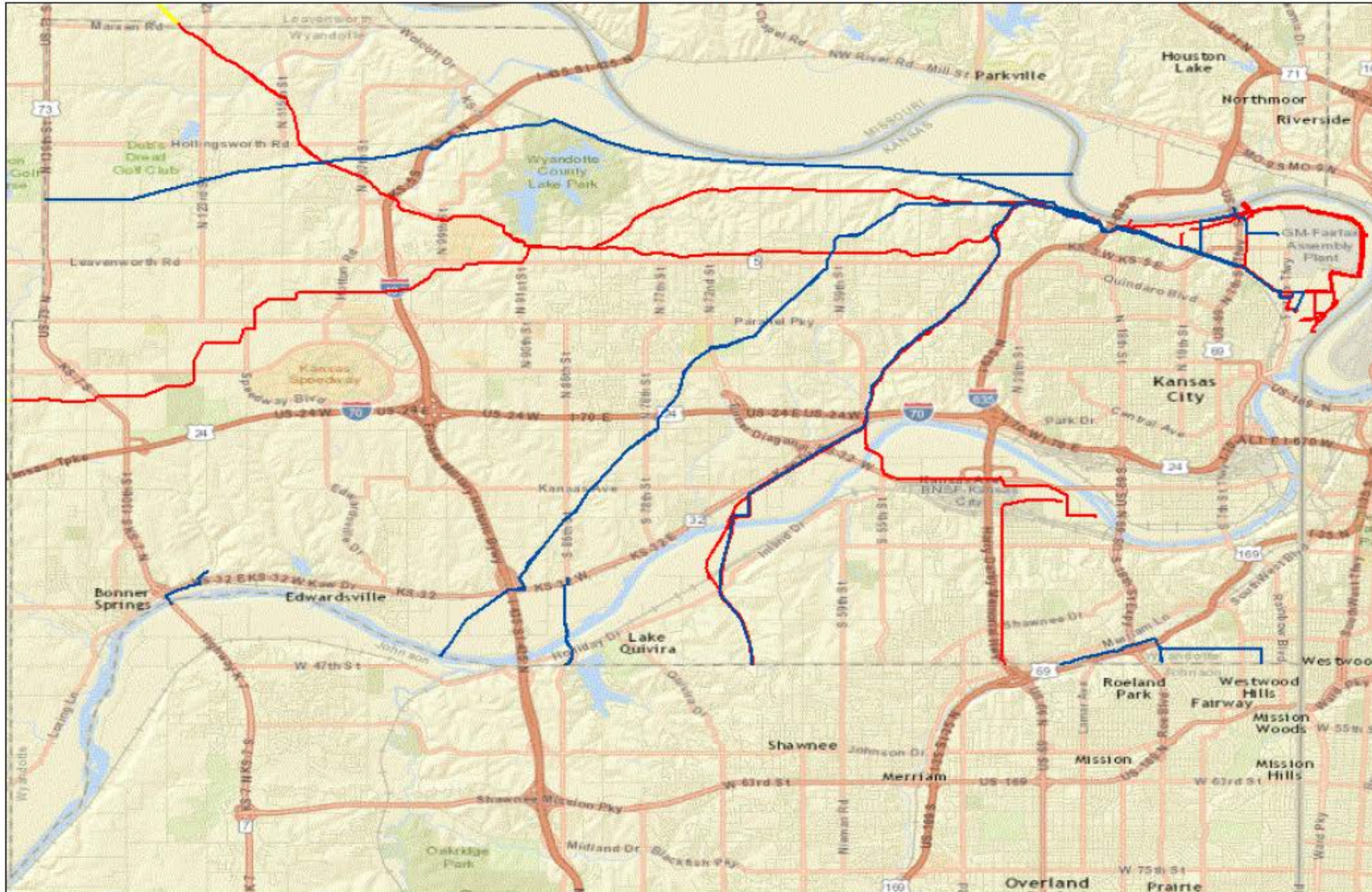
Map produced by the NPMS Public Viewer at www.npms.phmsa.dot.gov

Date Printed: Sep 09, 2015





NATIONAL PIPELINE MAPPING SYSTEM



Legend

- Gas Transmission Pipelines
- Hazardous Liquid Pipelines

**Wyandotte County
Kansas
Pipeline Map**

10 Miles

Pipelines depicted on this map represent gas transmission and hazardous liquid lines only. Gas gathering and gas distribution systems are not represented.

This map should never be used as a substitute for contacting a one-call center prior to excavation activities. Please call 811 before any digging occurs.

Questions regarding this map or its contents can be directed to npms-nr@mbakercorp.com.

Projection: Geographic
Datum: NAD83
Map produced by the NPMS Public Viewer at www.npms.phmsa.dot.gov
Date Printed: Sep 09, 2015

Johnson County Kansas Pipeline Operator Contact Information

Pipeline Operator ID & Name	Person To Contact	Entity To Contact	Contact Address	Phone / Fax / Email
10035 - KPC PIPELINE, LLC	Rob Kitterman (Operations Manager)		19970 West 161st St., Olathe, KS 66062	Phone: 9137646015 Fax: 9137646021 Email: rkitterman@mvpipelines.com
1007 - TALLGRASS INTERSTATE GAS TRANSMISSION, LLC	Ed Donohoe (Director Great Plains Region)		3808 28th Ave Suite B, Kearney, NE 68845	Phone: 3088650720 Fax: Email: ed.donohoe@tallgrassenergyllp.com
15105 - PANHANDLE EASTERN PIPELINE CO	Nathan Hlavaty (Director - Interstate Regulatory Compliance)		1300 Main Street, Houston, TX 77002	Phone: 7138575479 Fax: Email: nathan.hlavaty@energytransfer.com
15156 - SINCLAIR TRANSPORTATION COMPANY	Jonathan Brown (Regulatory Compliance Coordinator)		P.O. Box 185 100 E. Washington, Sinclair, WY 82334	Phone: 3073283643 Fax: 3073283504 Email: jbrown@sinclairoil.com
22610 - MAGELLAN PIPELINE COMPANY, LP	Ken Lybarger (Regulatory Compliance Coordinator)		One Williams Center MD OTC-9, Tulsa, OK 74172	Phone: 9185747315 Fax: 9185747377 Email: Ken.lybarger@magellanlp.com
30769 - MISSOURI GAS ENERGY	Mark Lauber (Manager of Pipeline Safety)		700 Market Street, Saint Louis, MO 63101	Phone: 3146585413 Fax: Email: Mark.Lauber@thelacledegroupp.com
31100 - DANISCO CULTOR USA INC	Joe Mulligan		201 New Century Parkway, New Century, KS 66031	Phone: 9137383541 Fax: Email: joe.mulligan@danisco.com
31181 - AGC FLAT GLASS NORTH AMERICA, INC		Engineering Manager	20400 North Webster Street, Spring Hill, KS 66083	Phone: 9135926100 Fax: Email: agc_sh_engineering@us.agc.com
31684 - PHILLIPS 66 PIPELINE LLC	Ed Hetsko (Technical Services Engineering Lead)		3010 Briarpark Drive 7320-24 PWC, Houston, TX 77042	Phone: 8327651658 Fax: Email: ed.hetsko@p66.com
31711 - SOUTHERN STAR CENTRAL GAS PIPELINE, INC	David Sinclair (Manager, Pipeline Compliance)		4700 Highway 56, Owensboro, KY 42301	Phone: 2708524424 Fax: 2708525016 Email: David.L.Sinclair@sscgp.com
31855 - KANSAS CITY POWER & LIGHT	Joe Medina (Combustion Turbine Superintendent)		P.O. Box 418679, Kansas City, MO 64141	Phone: 9138943059 Fax: Email: Joe.Medina@kcpl.com
32287 - CITY OF GARDNER	Evan Rose (Electrical Staff Engineer)		1150 E Santa Fe, Gardner, KS 66030	Phone: 9138567256 Fax: Email: erose@gardnerkansas.gov
32577 - EIF KC LANDFILL GAS, LLC	Peter Britton (Facility Manager)		17955 Holliday Dr., Shawnee, KS 66217	Phone: 9134413644 Fax: Email: peter.britton@landfillenergy.com

Pipeline Operator ID & Name	Person To Contact	Entity To Contact	Contact Address	Phone / Fax / Email
22610 - MAGELLAN PIPELINE COMPANY, LP	Ken Lybarger (Regulatory Compliance Coordinator)		One Williams Center MD OTC-9, Tulsa, OK 74172	Phone: 9185747315 Fax: 9185747377 Email: Ken.lybarger@magellanlp.com
30059 - MIDWEST GRAIN PIPELINE, INC.	Matthew Collins (Supply Chain Manager)		P.O. Box 130 1300 Main Street, Atchison, KS 66002	Phone: 9133605257 Fax: Email: matthew.collins@mgpingredients.com
31618 - ENTERPRISE PRODUCTS OPERATING LLC	Mike McLaughlin (Senior Manager, Public Awareness & Damage Prev)		1100 Louisiana, Houston, TX 77002	Phone: 7133812802 Fax: Email: MMclaughlin@eprod.com
31711 - SOUTHERN STAR CENTRAL GAS PIPELINE, INC	David Sinclair (Manager, Pipeline Compliance)		4700 Highway 56, Owensboro, KY 42301	Phone: 2708524424 Fax: 2708525016 Email: David.L.Sinclair@sscgp.com

Wyandotte County Kansas Pipeline Operator Contact Information

Pipeline Operator ID & Name	Person To Contact	Entity To Contact	Contact Address	Phone / Fax / Email
10035 - KPC PIPELINE, LLC	Rob Kitterman (Operations Manager)		19970 West 161st St., Olathe, KS 66062	Phone: 9137646015 Fax: 9137646021 Email: rkitterman@mvpipelines.com
22610 - MAGELLAN PIPELINE COMPANY, LP	Ken Lybarger (Regulatory Compliance Coordinator)		One Williams Center MD OTC-9, Tulsa, OK 74172	Phone: 9185747315 Fax: 9185747377 Email: Ken.lybarger@magellanlp.com
31684 - PHILLIPS 66 PIPELINE LLC	Ed Hetsko (Technical Services Engineering Lead)		3010 Briarpark Drive 7320-24 PWC, Houston, TX 77042	Phone: 8327651658 Fax: Email: ed.hetsko@p66.com
31711 - SOUTHERN STAR CENTRAL GAS PIPELINE, INC	David Sinclair (Manager, Pipeline Compliance)		4700 Highway 56, Owensboro, KY 42301	Phone: 2708524424 Fax: 2708525016 Email: David.L.Sinclair@sscgp.com

Cass County Missouri Pipeline Operator Contact Information

Pipeline Operator ID & Name	Person To Contact	Entity To Contact	Contact Address	Phone / Fax / Email
1007 - TALLGRASS INTERSTATE GAS TRANSMISSION, LLC	Ed Donohoe (Director Great Plains Region)		3808 28th Ave Suite B, Kearney, NE 68845	Phone: 3088650720 Fax: Email: ed.donohoe@tallgrassenergyllp.com
15105 - PANHANDLE EASTERN PIPELINE CO	Nathan Hlavaty (Director - Interstate Regulatory Compliance)		1300 Main Street, Houston, TX 77002	Phone: 7138575479 Fax: Email: nathan.hlavaty@energytransfer.com
30769 - MISSOURI GAS ENERGY	Mark Lauber (Manager of Pipeline Safety)		700 Market Street, Saint Louis, MO 63101	Phone: 3146585413 Fax: Email: Mark.Lauber@thelacledegroup.com
31189 - BP PIPELINE (NORTH AMERICA) INC.	Bobby Roye (Damage Prevention Manager)		4502 E. 41st St., Suite 300, Tulsa, OK 74135	Phone: 8005486482 Fax: Email: bobby.roye@bp.com
31684 - PHILLIPS 66 PIPELINE LLC	Ed Hetsko (Technical Services Engineering Lead)		3010 Briarpark Drive 7320-24 PWC, Houston, TX 77042	Phone: 8327651658 Fax: Email: ed.hetsko@p66.com
31711 - SOUTHERN STAR CENTRAL GAS PIPELINE, INC	David Sinclair (Manager, Pipeline Compliance)		4700 Highway 56, Owensboro, KY 42301	Phone: 2708524424 Fax: 2708525016 Email: David.L.Sinclair@sscgp.com
32080 - CCPS TRANSPORTATION, LLC	Ron Carlberg (Manager, US Pipeline Compliance)		26 E Superior Street Suite 309, Duluth, MN 55802	Phone: 2184645743 Fax: Email: ron.carlberg@enbridge.com
32265 - DOGWOOD ENERGY, LLC	David Wood (Manager - U.S.D.I.)		28847 U.S. HWY 136, Unionville, MO 63565	Phone: 6609473316 Fax: 6609473146 Email: davewood@nemr.net

Clay County Missouri Pipeline Operator Contact Information

Pipeline Operator ID & Name	Person To Contact	Entity To Contact	Contact Address	Phone / Fax / Email
1845 - BUCKEYE PARTNERS, LP	Claudia Pankowski (Director, Regulatory Compliance)		Five TEK Park 9999 Hamilton Blvd., Breinigsville, PA 18031	Phone: 6109044113 Fax: Email: CPankowski@buckeye.com
22610 - MAGELLAN PIPELINE COMPANY, LP	Ken Lybarger (Regulatory Compliance Coordinator)		One Williams Center MD OTC-9, Tulsa, OK 74172	Phone: 9185747315 Fax: 9185747377 Email: Ken.lybarger@magellanlp.com
31618 - ENTERPRISE PRODUCTS OPERATING LLC	Mike McLaughlin (Senior Manager, Public Awareness & Damage Prev)		1100 Louisiana, Houston, TX 77002	Phone: 7133812802 Fax: Email: MMclaughlin@eprod.com

Jackson County Missouri Pipeline

Pipeline Operator ID & Name	Person To Contact	Entity To Contact	Contact Address	Phone / Fax / Email
10035 - KPC PIPELINE, LLC	Rob Kitterman (Operations Manager)		19970 West 161st St., Olathe, KS 66062	Phone: 9137646015 Fax: 9137646021 Email: rkitterman@mvpipelines.com
22610 - MAGELLAN PIPELINE COMPANY, LP	Ken Lybarger (Regulatory Compliance Coordinator)		One Williams Center MD OTC-9, Tulsa, OK 74172	Phone: 9185747315 Fax: 9185747377 Email: Ken.lybarger@magellanlp.com
30769 - MISSOURI GAS ENERGY	Mark Lauber (Manager of Pipeline Safety)		700 Market Street, Saint Louis, MO 63101	Phone: 3146585413 Fax: Email: Mark.Lauber@thelacledegroupp.com
31618 - ENTERPRISE PRODUCTS OPERATING LLC	Mike McLaughlin (Senior Manager, Public Awareness & Damage Prev)		1100 Louisiana, Houston, TX 77002	Phone: 7133812802 Fax: Email: MMclaughlin@eprod.com
31711 - SOUTHERN STAR CENTRAL GAS PIPELINE, INC	David Sinclair (Manager, Pipeline Compliance)		4700 Highway 56, Owensboro, KY 42301	Phone: 2708524424 Fax: 2708525016 Email: David.L.Sinclair@sscgp.com
32109 - ONEOK NGL PIPELINE, LLC	Neal Jones (DOT Compliance Coordinator)		2001 South Highway 81, Medford, OK 73759	Phone: 5803956304 Fax: Email: Neal.Jones@oneok.com

Platte County Missouri Pipeline Operator Contact Information

Pipeline Operator ID & Name	Person To Contact	Entity To Contact	Contact Address	Phone / Fax / Email
10035 - KPC PIPELINE, LLC	Rob Kitterman (Operations Manager)		19970 West 161st St., Olathe, KS 66062	Phone: 9137646015 Fax: 9137646021 Email: rkitterman@mvpipelines.com
22610 - MAGELLAN PIPELINE COMPANY, LP	Ken Lybarger (Regulatory Compliance Coordinator)		One Williams Center MD OTC-9, Tulsa, OK 74172	Phone: 9185747315 Fax: 9185747377 Email: Ken.lybarger@magellanlp.com
30769 - MISSOURI GAS ENERGY	Mark Lauber (Manager of Pipeline Safety)		700 Market Street, Saint Louis, MO 63101	Phone: 3146585413 Fax: Email: Mark.Lauber@thelacledegroupp.com
31618 - ENTERPRISE PRODUCTS OPERATING LLC	Mike McLaughlin (Senior Manager, Public Awareness & Damage Prev)		1100 Louisiana, Houston, TX 77002	Phone: 7133812802 Fax: Email: MMclaughlin@eprod.com
31711 - SOUTHERN STAR CENTRAL GAS PIPELINE, INC	David Sinclair (Manager, Pipeline Compliance)		4700 Highway 56, Owensboro, KY 42301	Phone: 2708524424 Fax: 2708525016 Email: David.L.Sinclair@sscgp.com
32109 - ONEOK NGL PIPELINE, LLC	Neal Jones (DOT Compliance Coordinator)		2001 South Highway 81, Medford, OK 73759	Phone: 5803956304 Fax: Email: Neal.Jones@oneok.com

Ray County Missouri Pipeline Operator Contact Information

Pipeline Operator ID & Name	Person To Contact	Entity To Contact	Contact Address	Phone / Fax / Email
15156 - SINCLAIR TRANSPORTATION COMPANY	Jonathan Brown (Regulatory Compliance Coordinator)		P.O. Box 185 100 E. Washington, Sinclair, WY 82334	Phone: 3073283643 Fax: 3073283504 Email: jbrown@sinclairoil.com
1845 - BUCKEYE PARTNERS, LP	Claudia Pankowski (Director, Regulatory Compliance)		Five TEK Park 9999 Hamilton Blvd., Breinigsville, PA 18031	Phone: 6109044113 Fax: Email: CPankowski@buckeye.com
31618 - ENTERPRISE PRODUCTS OPERATING LLC	Mike McLaughlin (Senior Manager, Public Awareness & Damage Prev)		1100 Louisiana, Houston, TX 77002	Phone: 7133812802 Fax: Email: MMclaughlin@eprod.com

