

APPENDIX A: HAZARD ANALYSIS MAPS

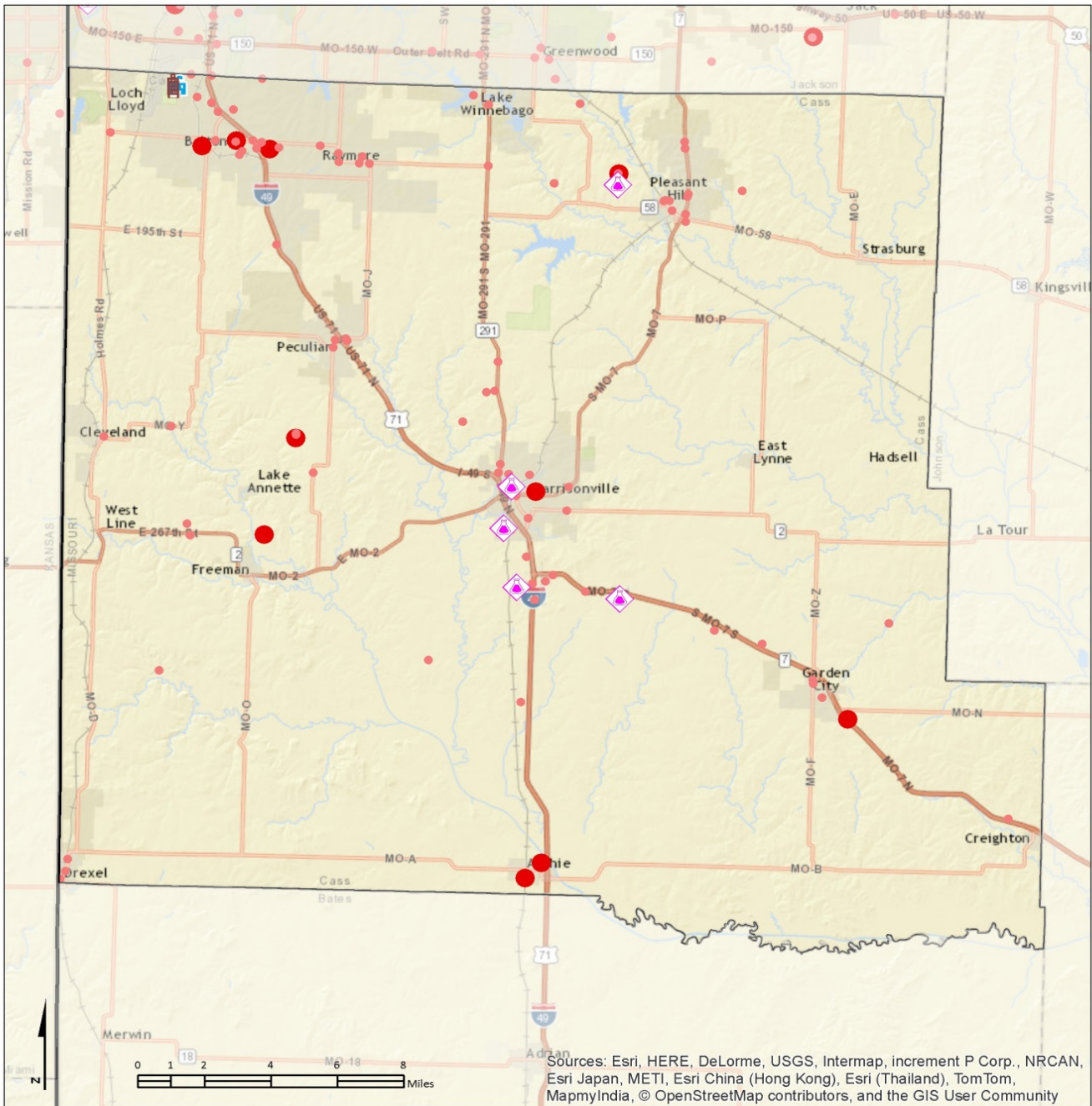
Some of the full hazard analysis has been included in this appendix, but due to potentially sensitive information, certain information has been redacted from the public version of this Plan. Full information has been disclosed to all the public safety agencies.

For information on how to request the regional hazard analysis document in written or electronic format please contact Mid-America LEPC at:

Mid-America LEPC c/o Erin Lynch
600 Broadway, Suite 200
Kansas City, Missouri 64105-1659 (816) 474-4240
Fax: (816) 421-7758
E-mail: elynch@marc.org

The following figures indicates the hazards materials sites located near critical facilities such as hospitals, nursing homes, schools, child care facilities etc.

Appendix A – Hazard Analysis Maps

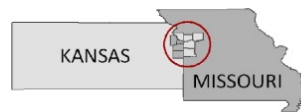


Tier II Hazards and Sensitive Populations

August 2015

Cass County

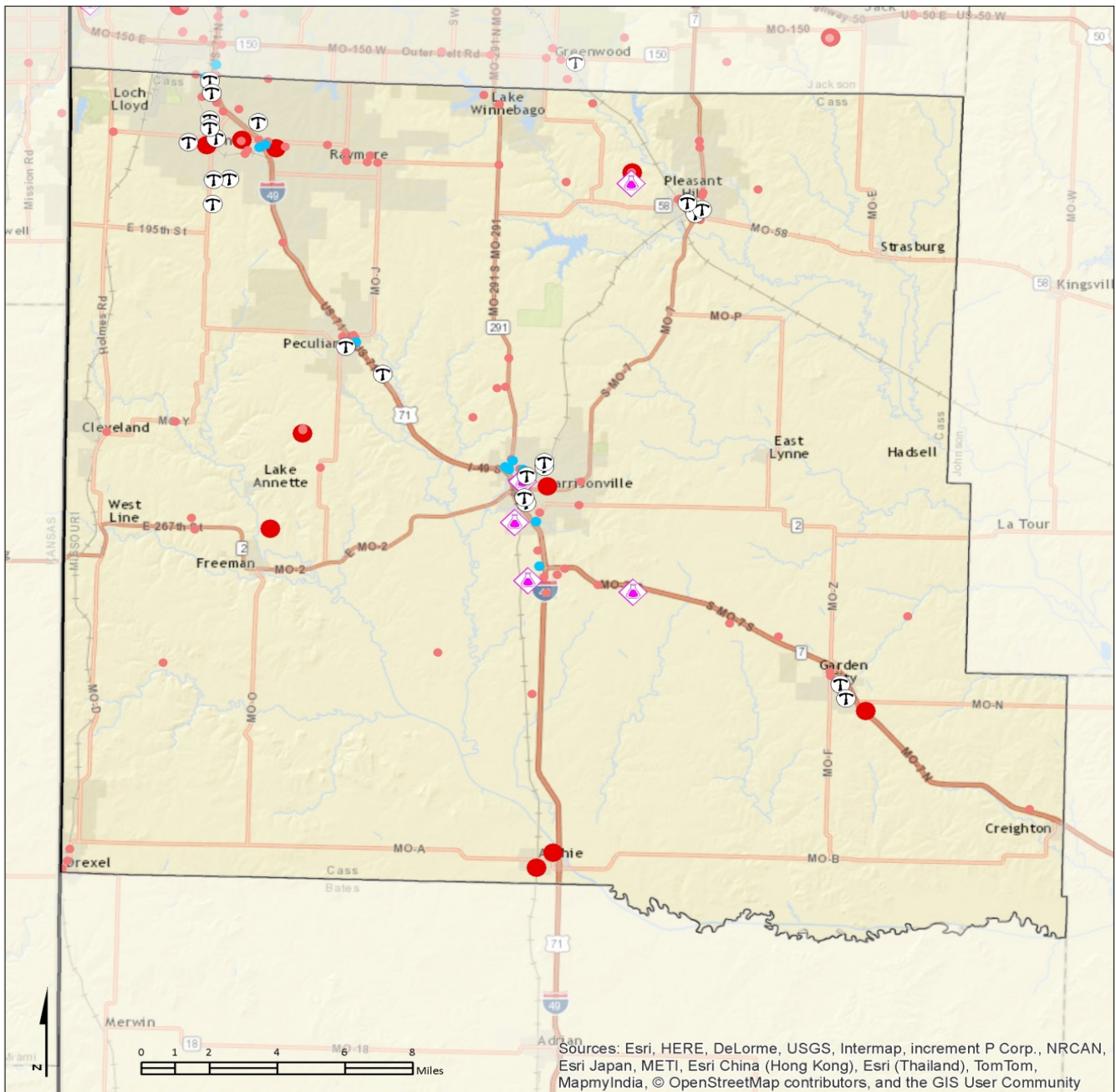
-  Dorms
-  Colleges
-  State boundary
-  Counties
-  RMP
-  Tier II : No EHS on site
-  Tier II : EHS on site



Note: The RMP facilities and Tier II facilities shown here are from reporting year 2014.

More information and data use policy available at www.marc.org/gis

Appendix A – Hazard Analysis Maps



Tier II Hazards and Sensitive Populations

August 2015

Cass County

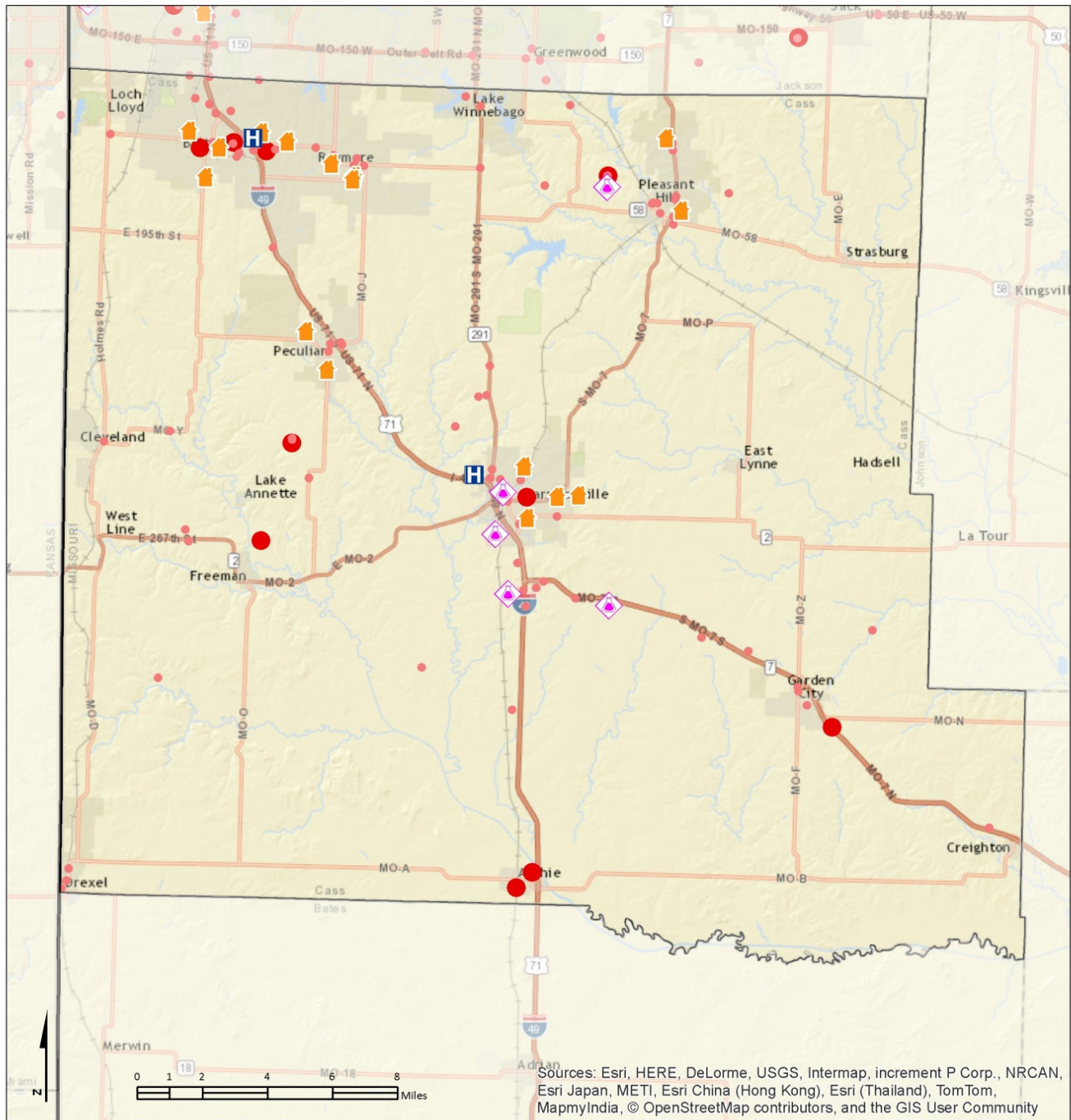
- Hotel
- Ⓣ Trailer Park
- Counties
- ◆ RMP
- Tier II : No EHS on site
- Tier II : EHS on site



Note: The RMP facilities and Tier II facilities shown here are from reporting year 2014.

More information and data use policy available at www.marc.org/gis

Appendix A – Hazard Analysis Maps

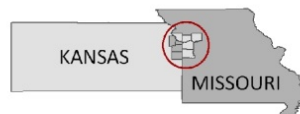


Tier II Hazards and Sensitive Populations

August 2015

Cass County

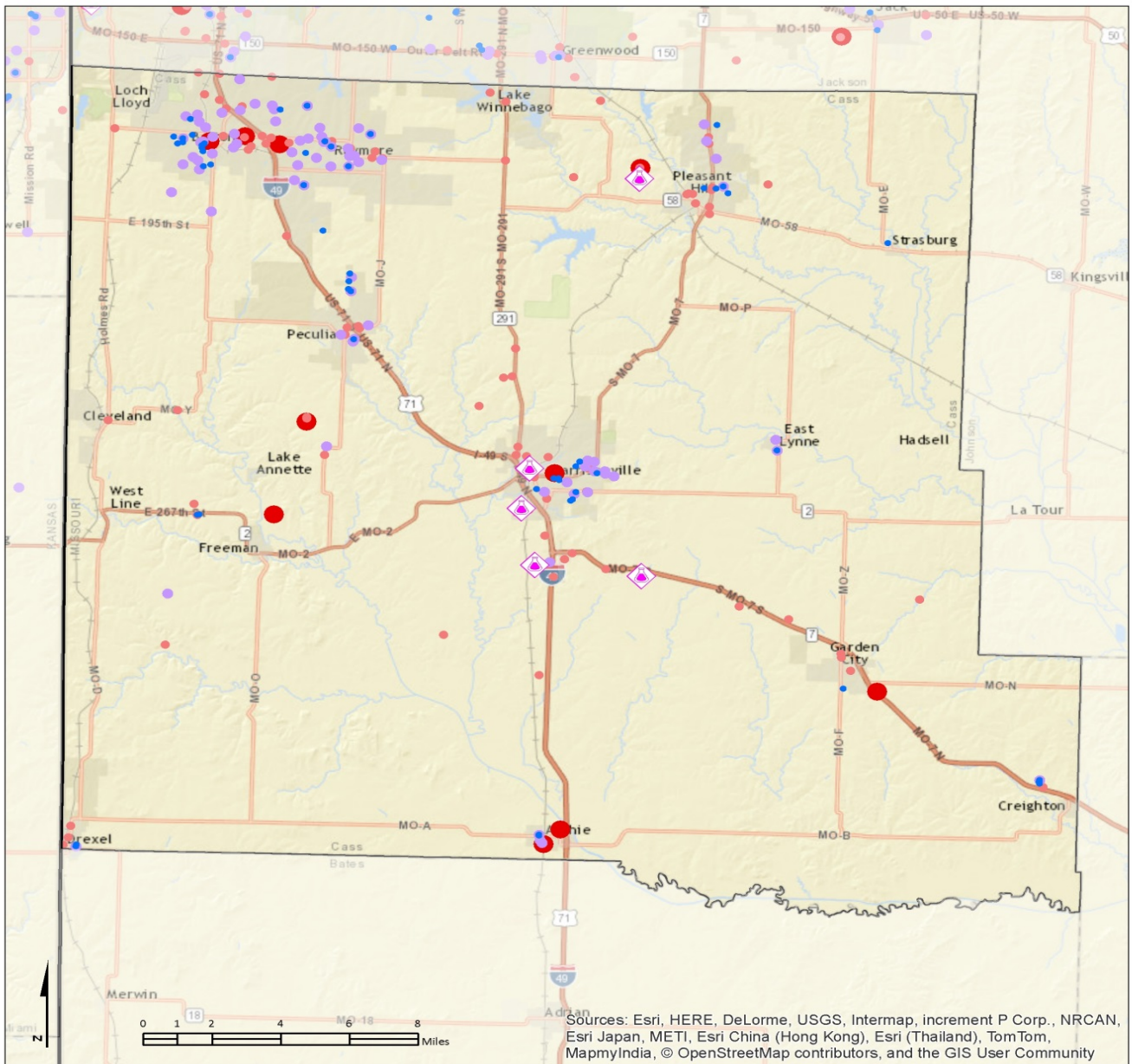
- Hospitals
- Nursing Homes
- State boundary
- Counties
- RMP
- Tier II : No EHS on site
- Cass County Hospitals /Nursing Homes



All facilities shown here are from reporting year 2014.

More information and data use policy available at www.marc.org/gis

Appendix A – Hazard Analysis Maps



Tier II Hazards and Sensitive Populations

August 2015

Cass County

- Child Care
- Schools
- State boundary
- Counties
- ◆ RMP
- Tier II : No EHS on site
- Tier II : EHS on site

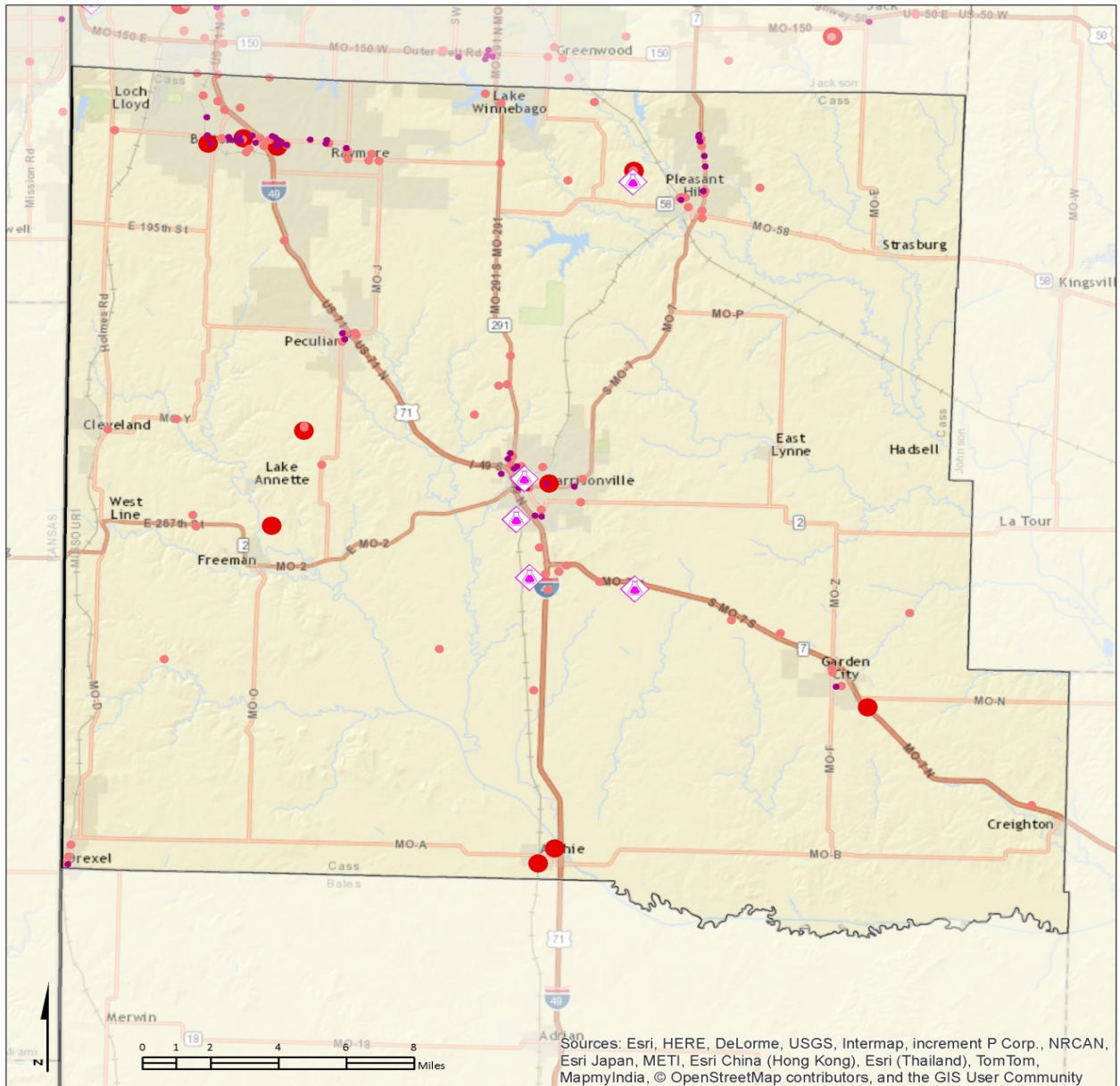


Note: The RMP facilities and Tier II facilities shown here are from reporting year 2014.

More information and data use policy available at www.marc.org/gis

Cass County Schools and Child Care Facilities

Appendix A – Hazard Analysis Maps



Tier II Hazards and Sensitive Populations
Cass County

August 2015

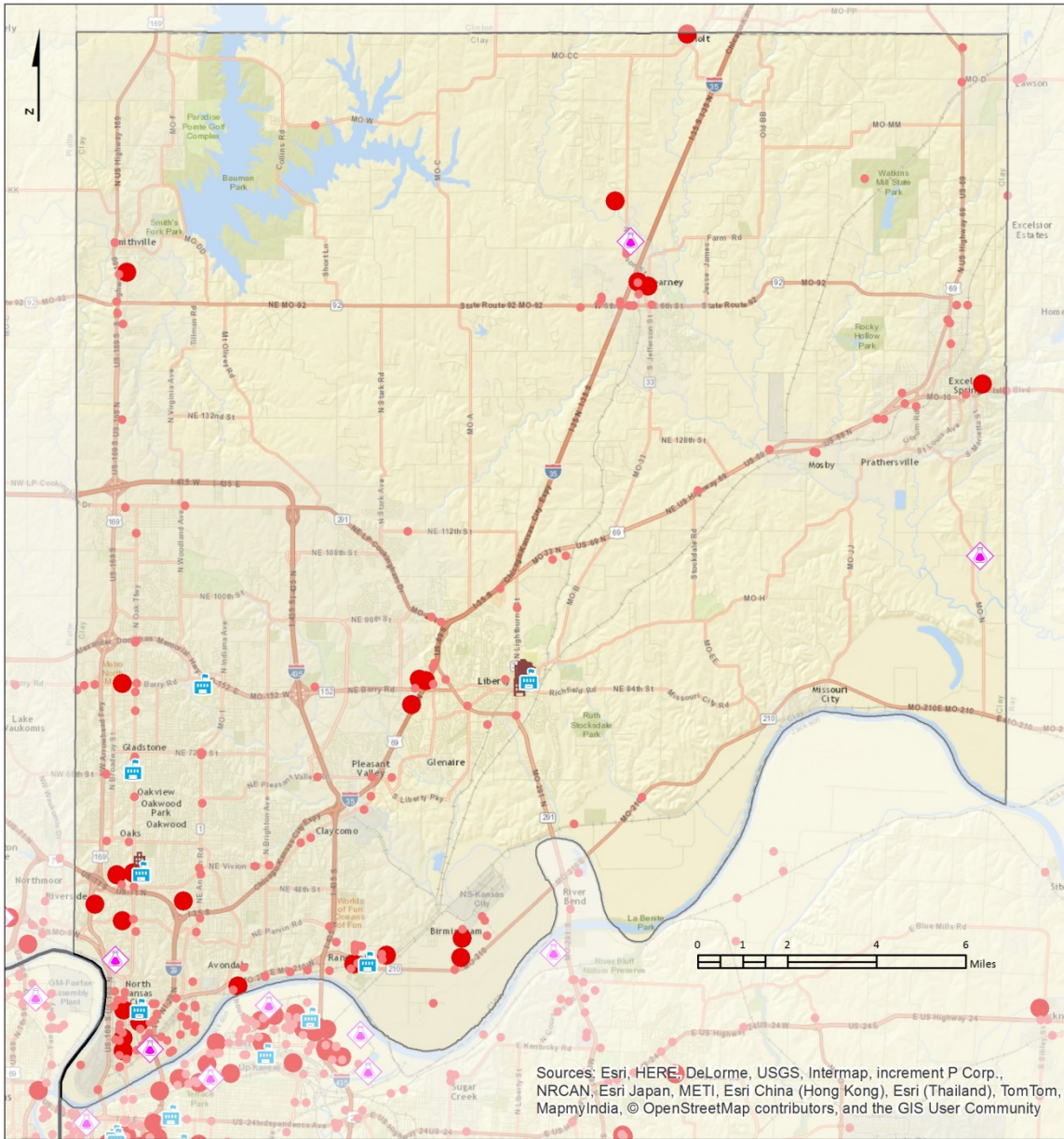
MARC
Mid-America Regional Council
Geographic Information Systems

- Shopping Centers
- ◆ RMP
- State boundary
- Tier II : No EHS on site
- Counties
- Tier II : EHS on site

Note: The RMP facilities and Tier II facilities shown here are from reporting year 2014.
More information and data use policy available at www.marc.org/gis

Cass County Shopping Centers

Appendix A – Hazard Analysis Maps



Tier II Hazards and Sensitive Populations
 Clay County

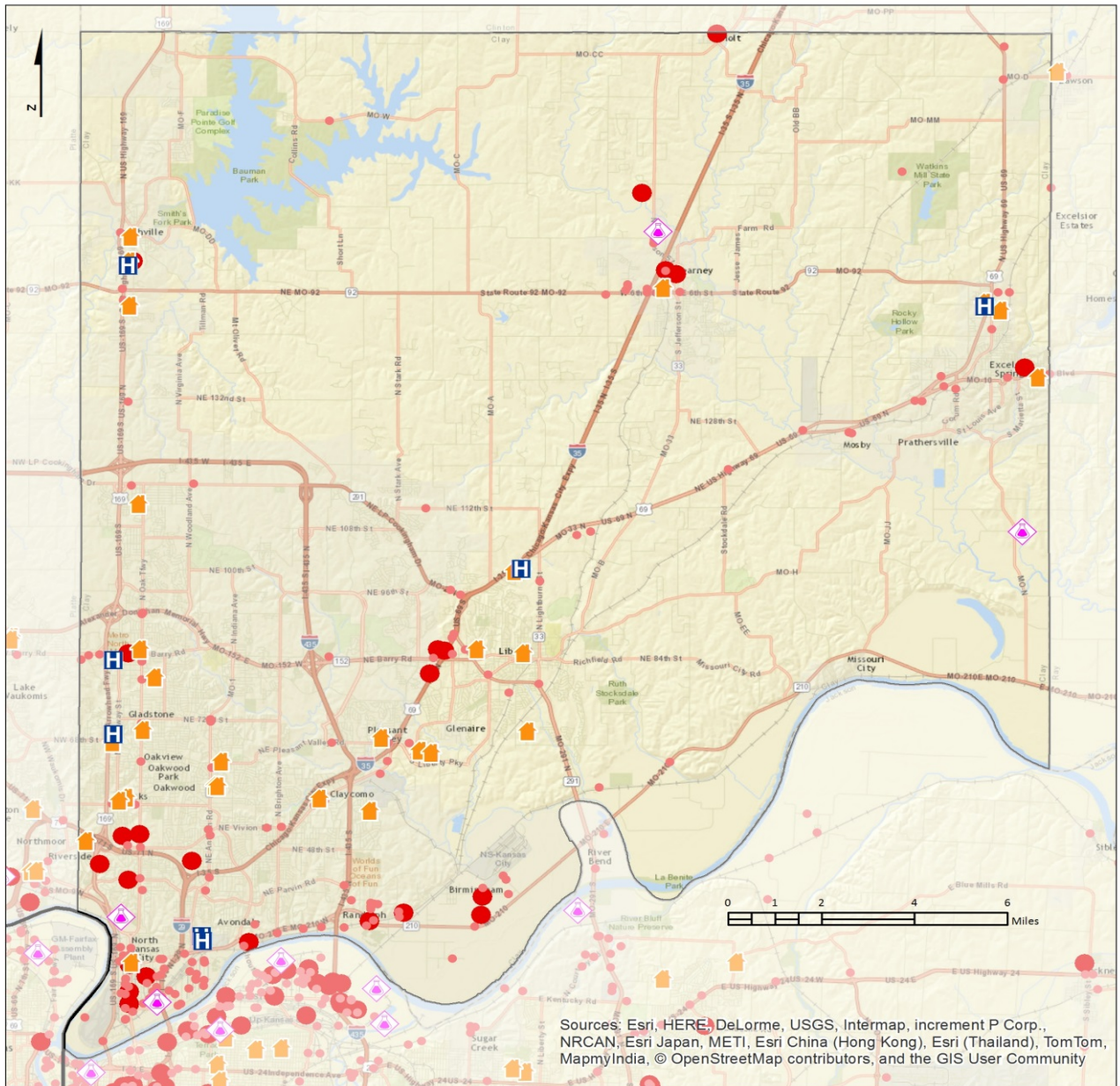
August 2015

Note: The RMP facilities and Tier II facilities shown here are from reporting year 2014.

More information and data use policy available at www.marc.org/gis

Clay County Colleges and Dorms

Appendix A – Hazard Analysis Maps



Tier II Hazards and Sensitive Populations
 Clay County

August 2015

	Hospitals		RMP
	Nursing Homes		Tier II : No EHS on site
	State boundary		Tier II : EHS on site
	Counties		

KANSAS
MISSOURI

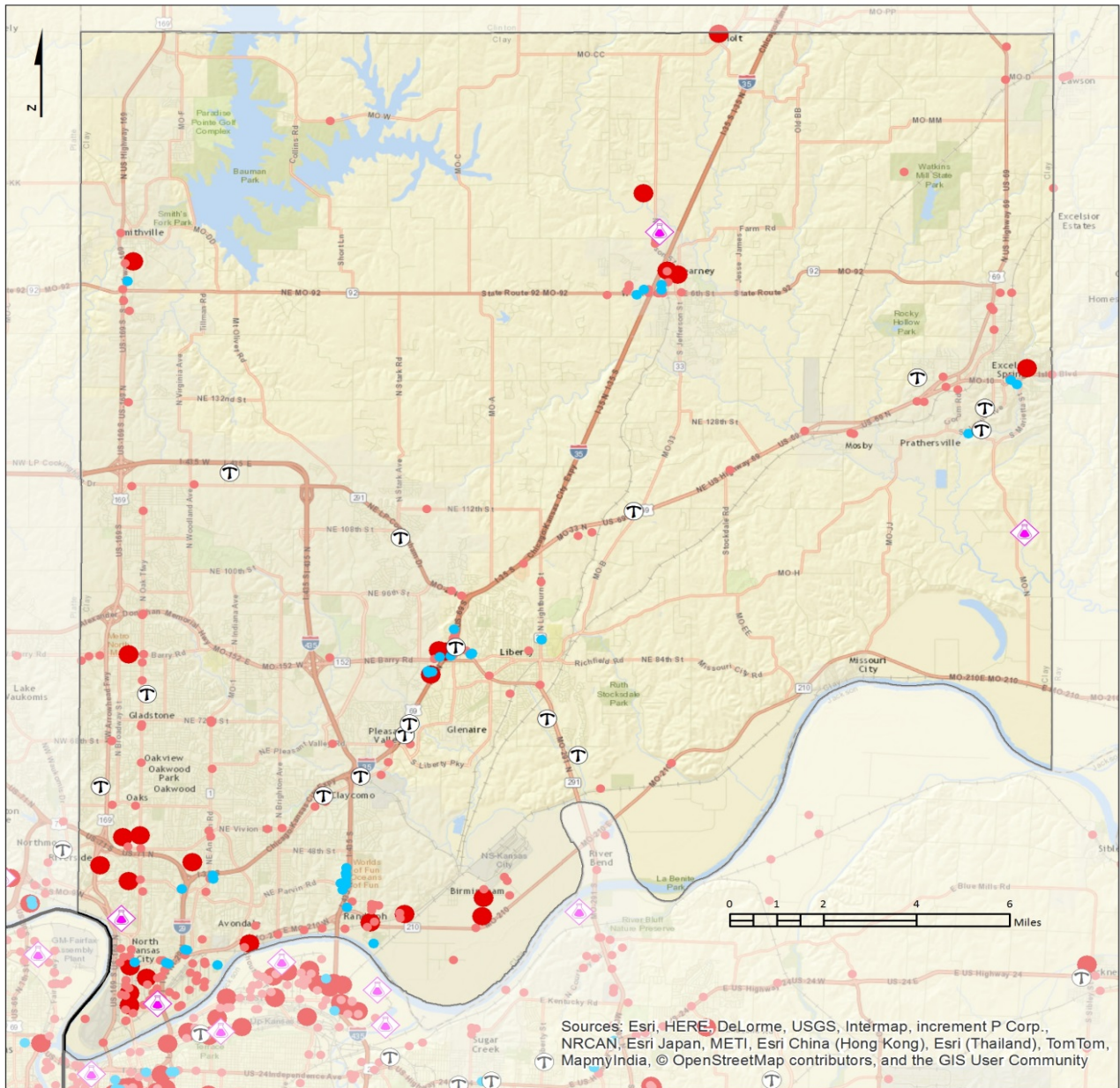
MARC
Mid-America Regional Council
Geographic Information Systems

Note: The RMP facilities and Tier II facilities shown here are from reporting year 2014.

More information and data use policy available at www.marc.org/gis

Clay County Hospitals and Nursing Homes

Appendix A – Hazard Analysis Maps



Tier II Hazards and Sensitive Populations

August 2015

Clay County

- Hotel
- Trailer Park
- State boundary
- Counties

- RMP
- Tier II : No EHS on site
- Tier II : EHS on site

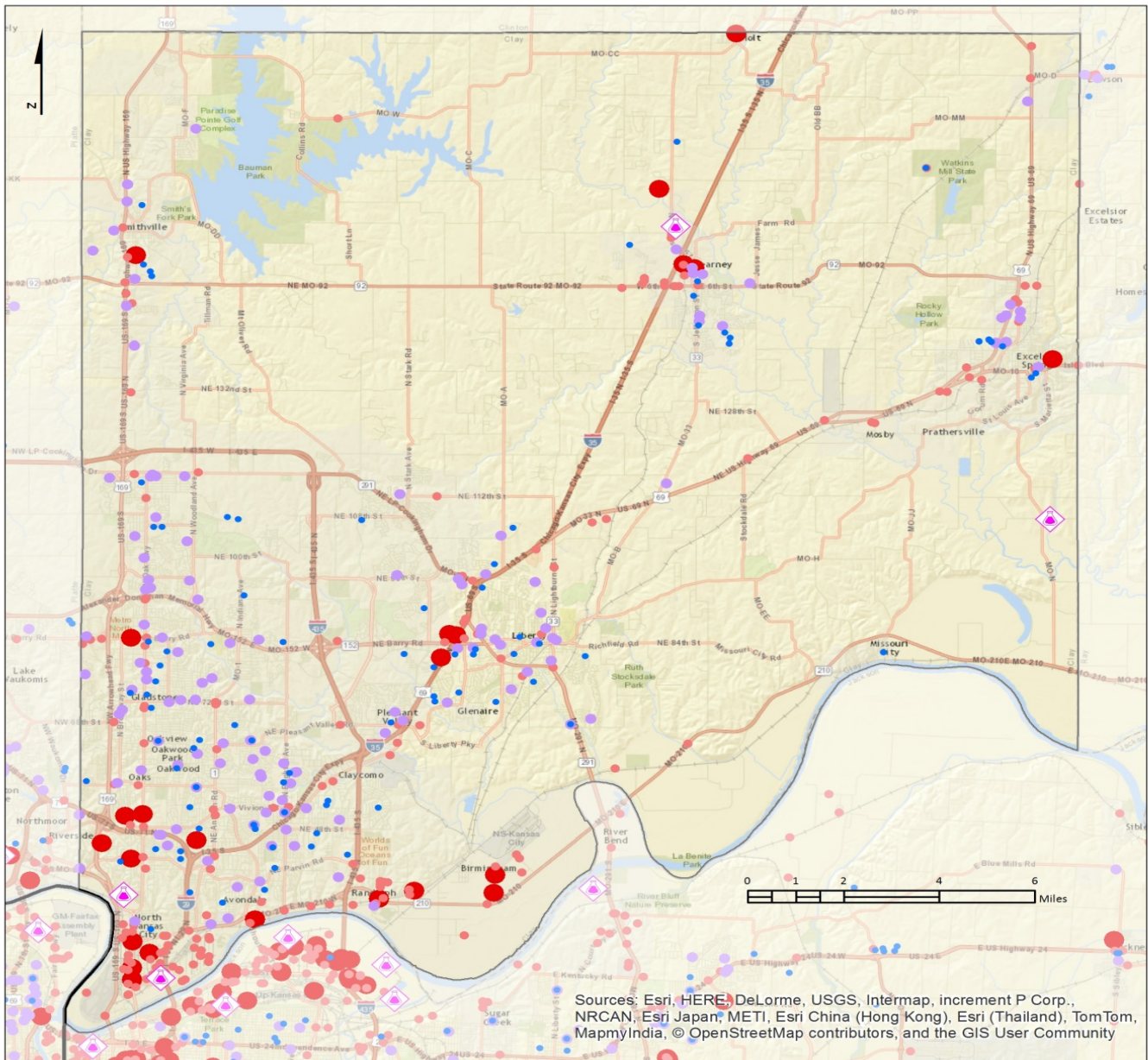
KANSAS MISSOURI

MARC
Mid-America Regional Council
Geographic Information Systems

Note: The RMP facilities and Tier II facilities shown here are from reporting year 2014.
More information and data use policy available at www.marc.org/gis

Clay County Hotels and Trailer Parks

Appendix A – Hazard Analysis Maps



Tier II Hazards and Sensitive Populations

August 2015

Clay County

- Schools
- Child Care
- State boundary
- Counties
- ◆ RMP
- Tier II : No EHS on site
- Tier II : EHS on site

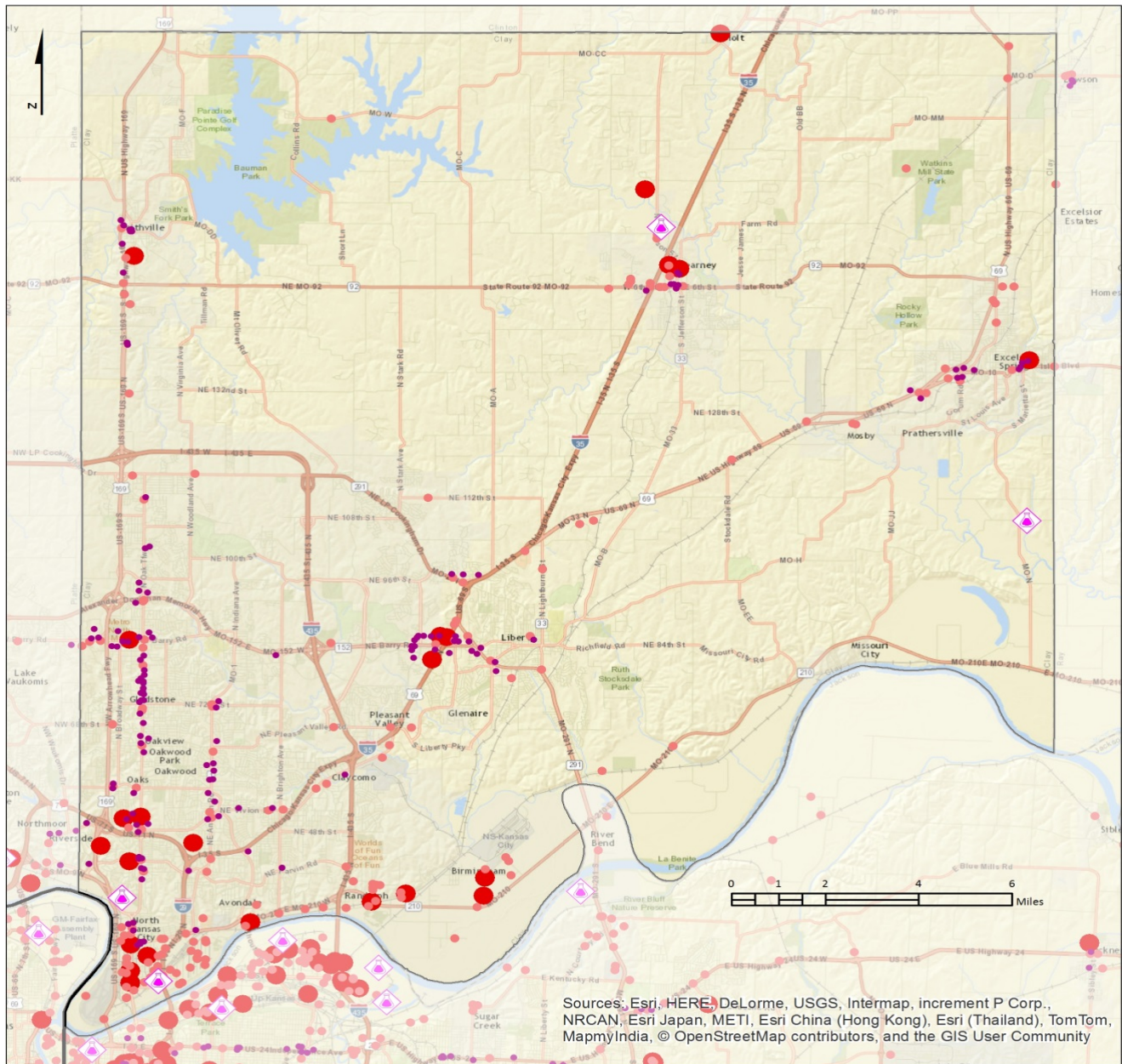


Note: The RMP facilities and Tier II facilities shown here are from reporting year 2014.

More information and data use policy available at www.marc.org/gis

Clay County Schools and Child Care Facilities

Appendix A – Hazard Analysis Maps



Tier II Hazards and Sensitive Populations
Clay County

August 2015



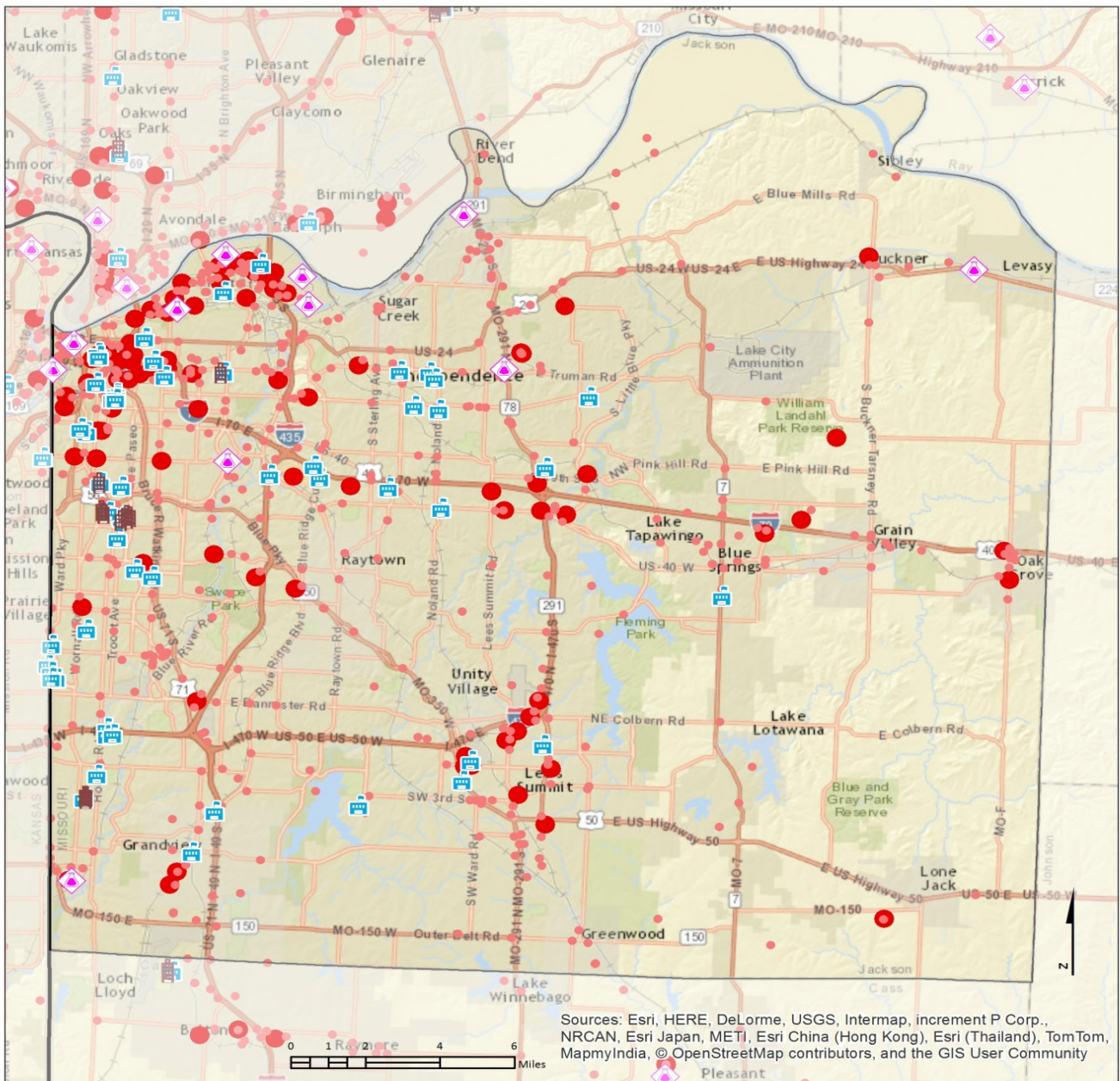
- Shopping Centers
- ◆ RMP
- State boundary
- Tier II : No EHS on site
- Counties
- Tier II : EHS on site

Note: The RMP facilities and Tier II facilities shown here are from reporting year 2014.

More information and data use policy available at www.marc.org/gis

Clay County Shopping Centers

Appendix A – Hazard Analysis Maps



Tier II Hazards and Sensitive Populations

August 2015

Jackson County

- Dorms
- Colleges
- RMP
- Tier II : No EHS on site
- Tier II : EHS on site
- State boundary
- Counties

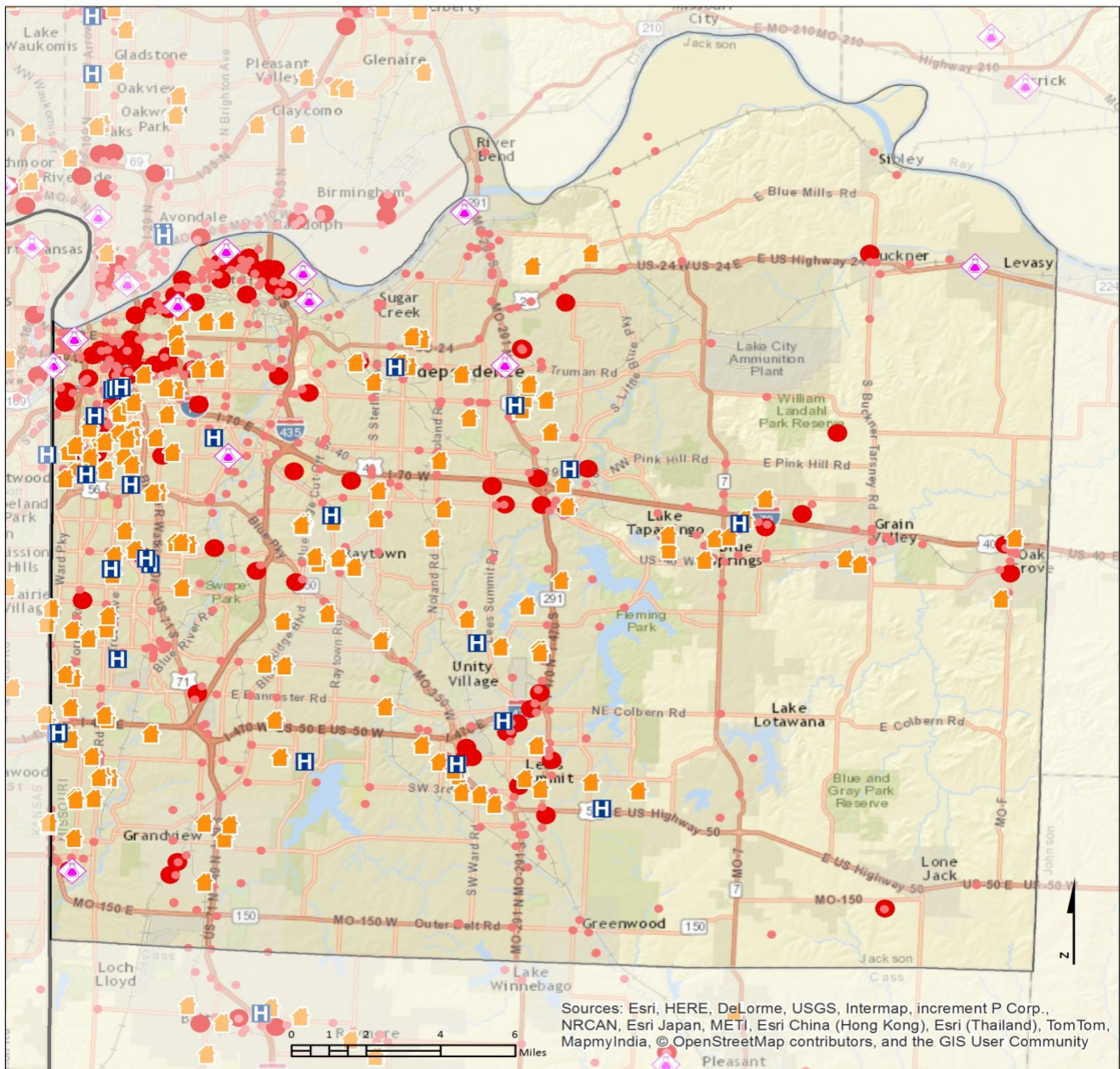


Note: The RMP facilities and Tier II facilities shown here are from reporting year 2014.

More information and data use policy available at www.marc.org/gis

Jackson County Colleges and Dorms

Appendix A – Hazard Analysis Maps



Sources: Esri, HERE, DeLorme, USGS, Intermap, increment P Corp., NRCAN, Esri Japan, METI, Esri China (Hong Kong), Esri (Thailand), TomTom, MapmyIndia, © OpenStreetMap contributors, and the GIS User Community

Tier II Hazards and Sensitive Populations

August 2015

Jackson County

- Hospitals
- Nursing Homes
- State boundary
- Counties
- RMP
- Tier II : No EHS on site
- Tier II : EHS on site

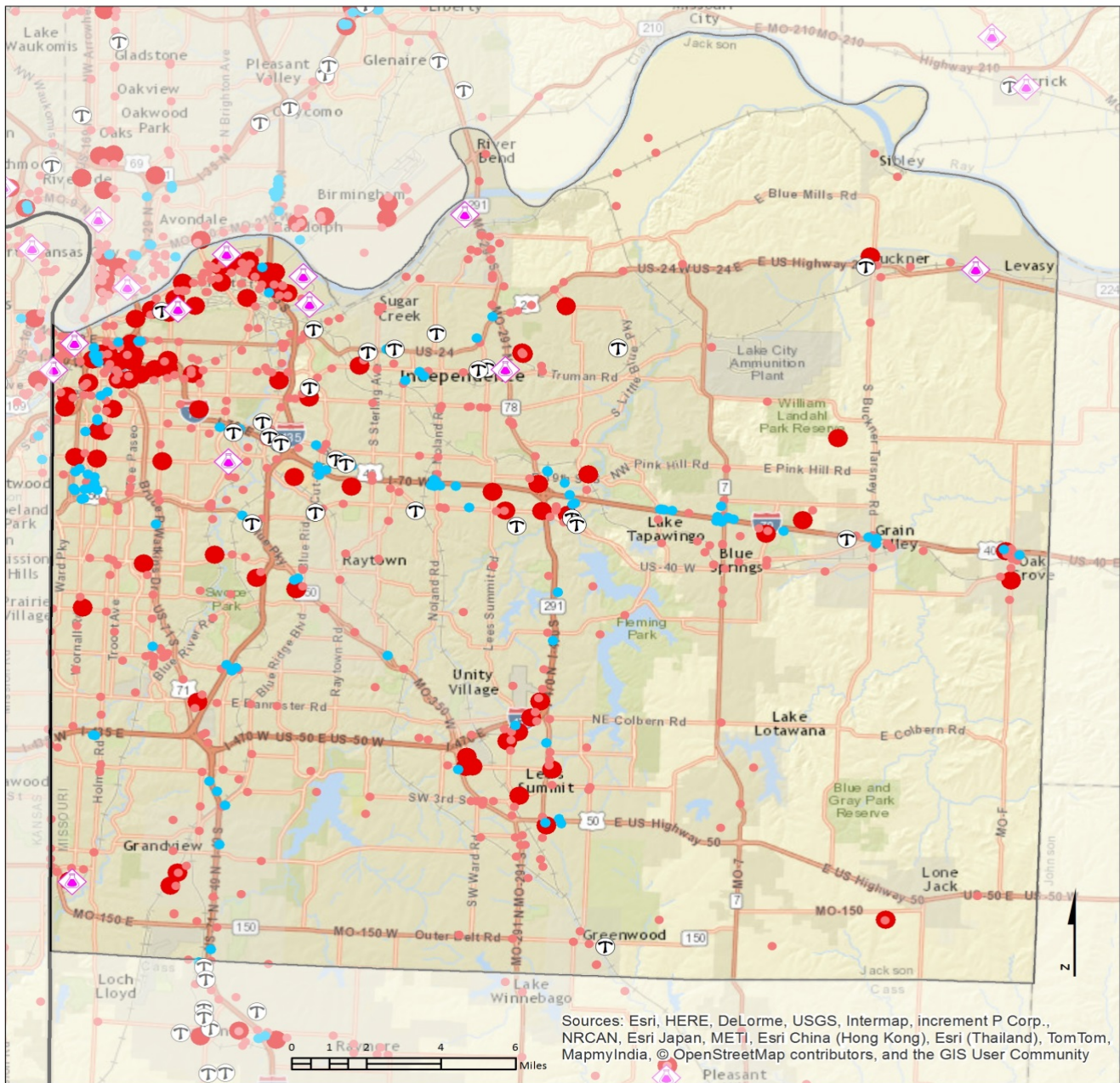


Note: The RMP facilities and Tier II facilities shown here are from reporting year 2014.

More information and data use policy available at www.marc.org/gis

Jackson County Hospitals and Nursing Homes

Appendix A – Hazard Analysis Maps



Tier II Hazards and Sensitive Populations

August 2015

Jackson County

- Hotel
- Ⓣ Trailer Park
- Counties
- ◆ RMP
- Tier II : No EHS on site
- Tier II : EHS on site

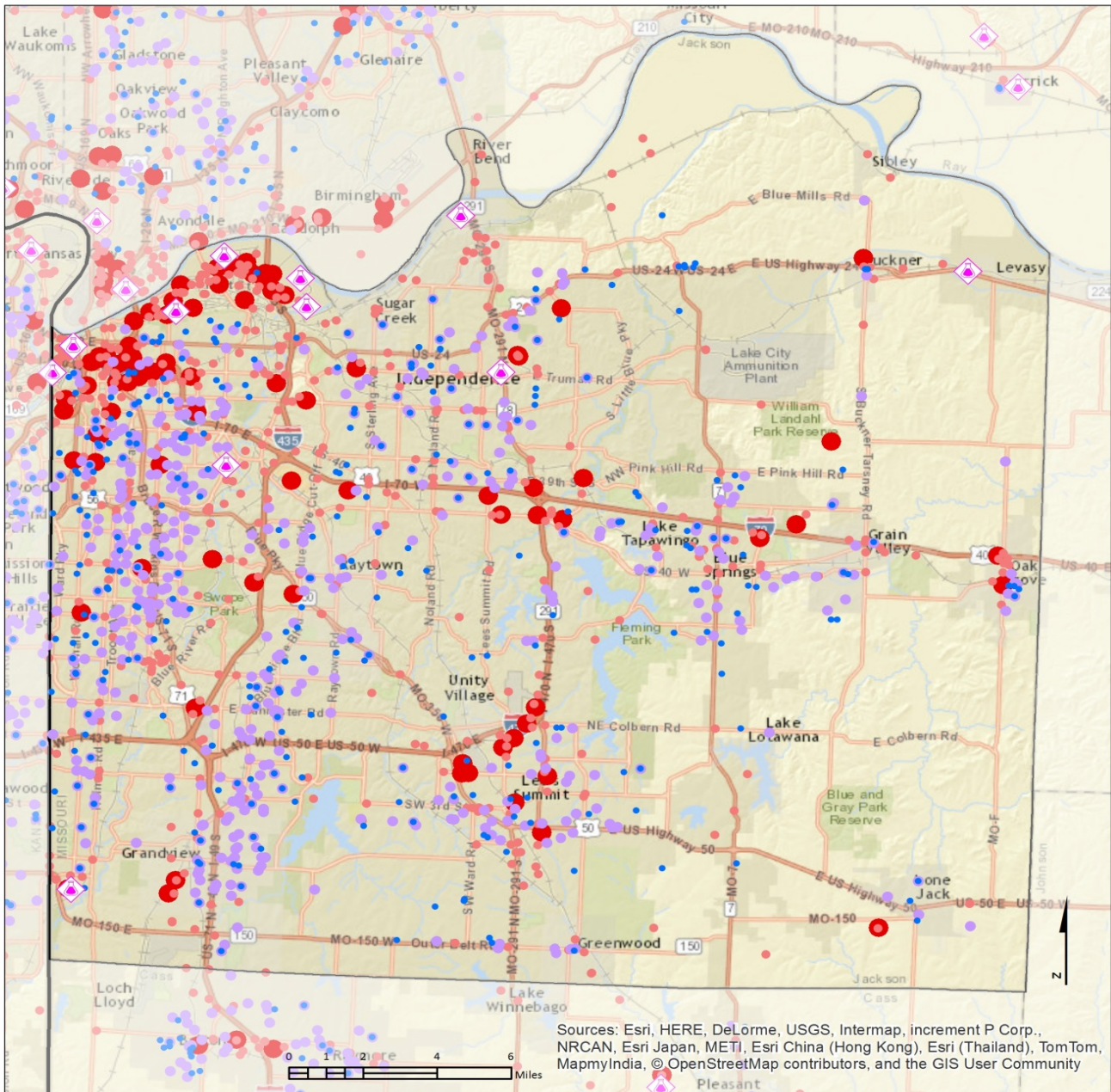


Note: The RMP facilities and Tier II facilities shown here are from reporting year 2014.

More information and data use policy available at www.marc.org/gis

Jackson County Hotels and Trailer parks

Appendix A – Hazard Analysis Maps



Tier II Hazards and Sensitive Populations
Jackson County

August 2015

● Child Care ● Tier II : EHS on site
● Schools ● Tier II : No EHS on site
 State boundary
 Counties

◆ RMP
◆ Tier II : No EHS on site
● Tier II : EHS on site

KANSAS

MISSOURI

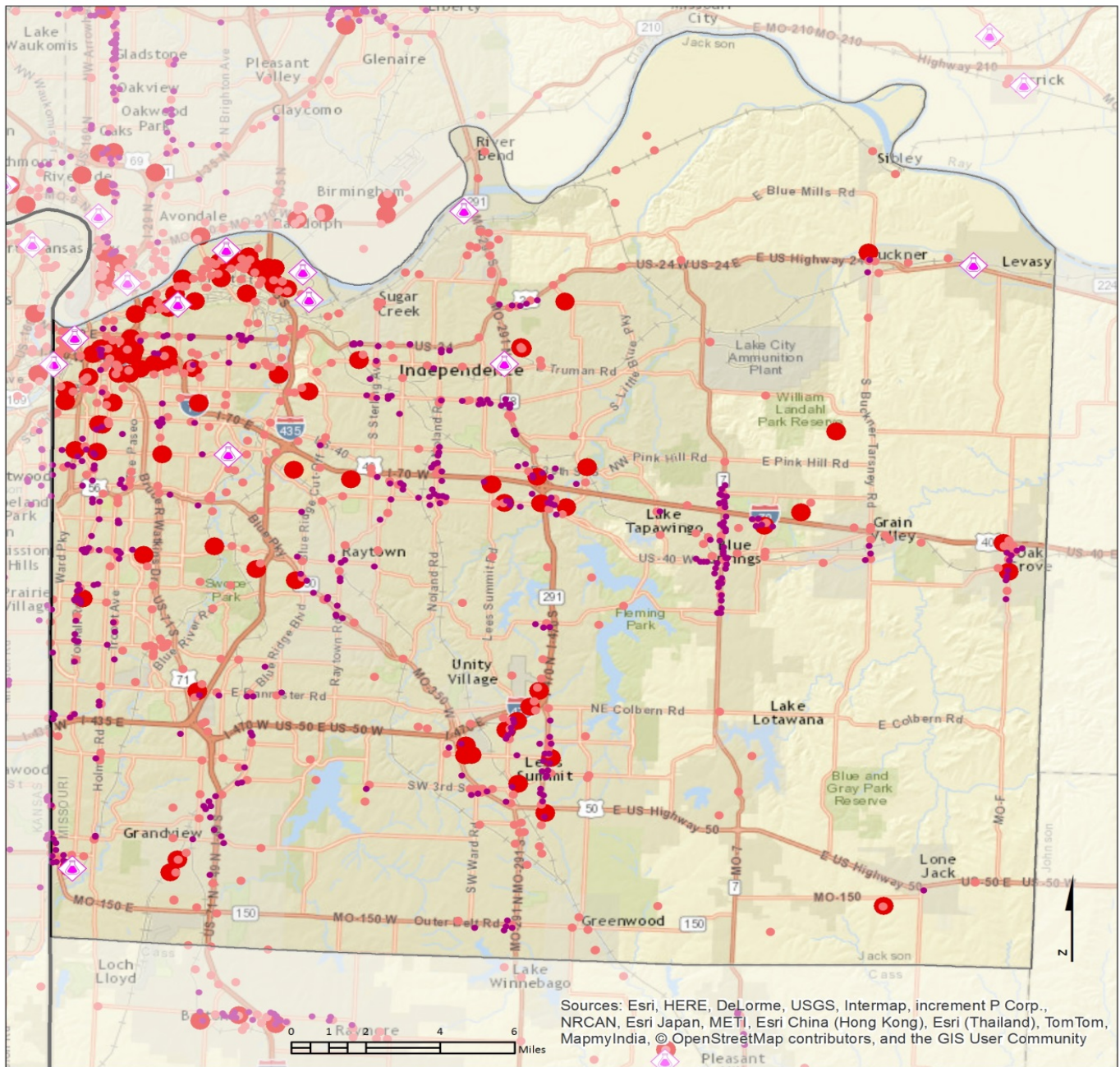
MARC

Mid-America Regional Council
 Geographic Information Systems

Note: The RMP facilities and Tier II facilities shown here are from reporting year 2014.

More information and data use policy available at www.marc.org/gis

Jackson County Schools and Child Care Facilities



Tier II Hazards and Sensitive Populations

Jackson County

August 2015

KANSAS

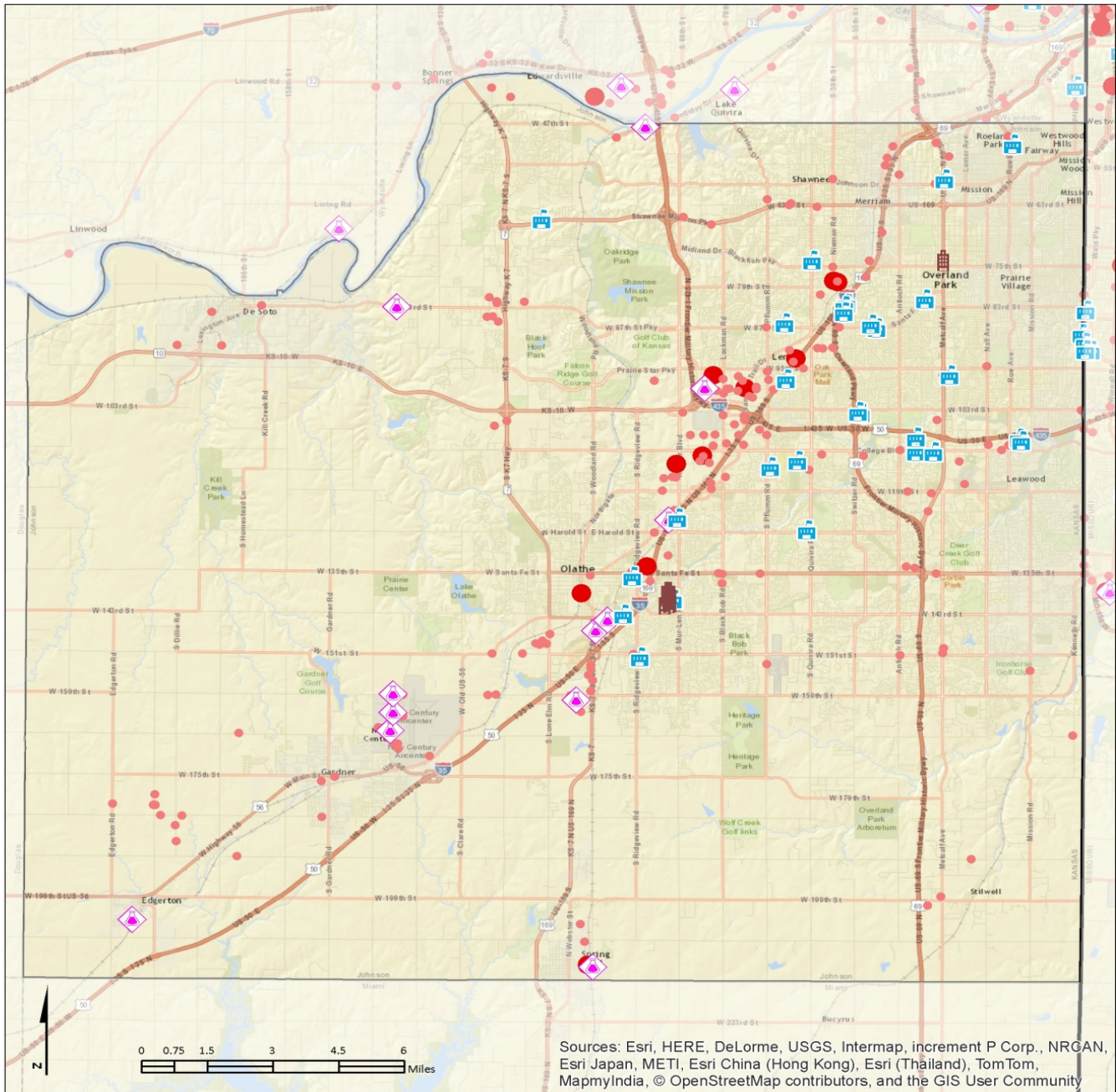
MISSOURI

Mid-America Regional Council
Geographic Information Systems

<ul style="list-style-type: none"> ● Shopping Centers State boundary Counties 	<ul style="list-style-type: none"> ◆ RMP ● Tier II : No EHS on site ● Tier II : EHS on site
---	--

Note: The RMP facilities and Tier II facilities shown here are from reporting year 2014.
More information and data use policy available at www.marc.org/gis

Appendix A – Hazard Analysis Maps

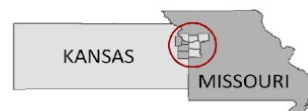


Tier II Hazards and Sensitive Populations

August 2015

Johnson County

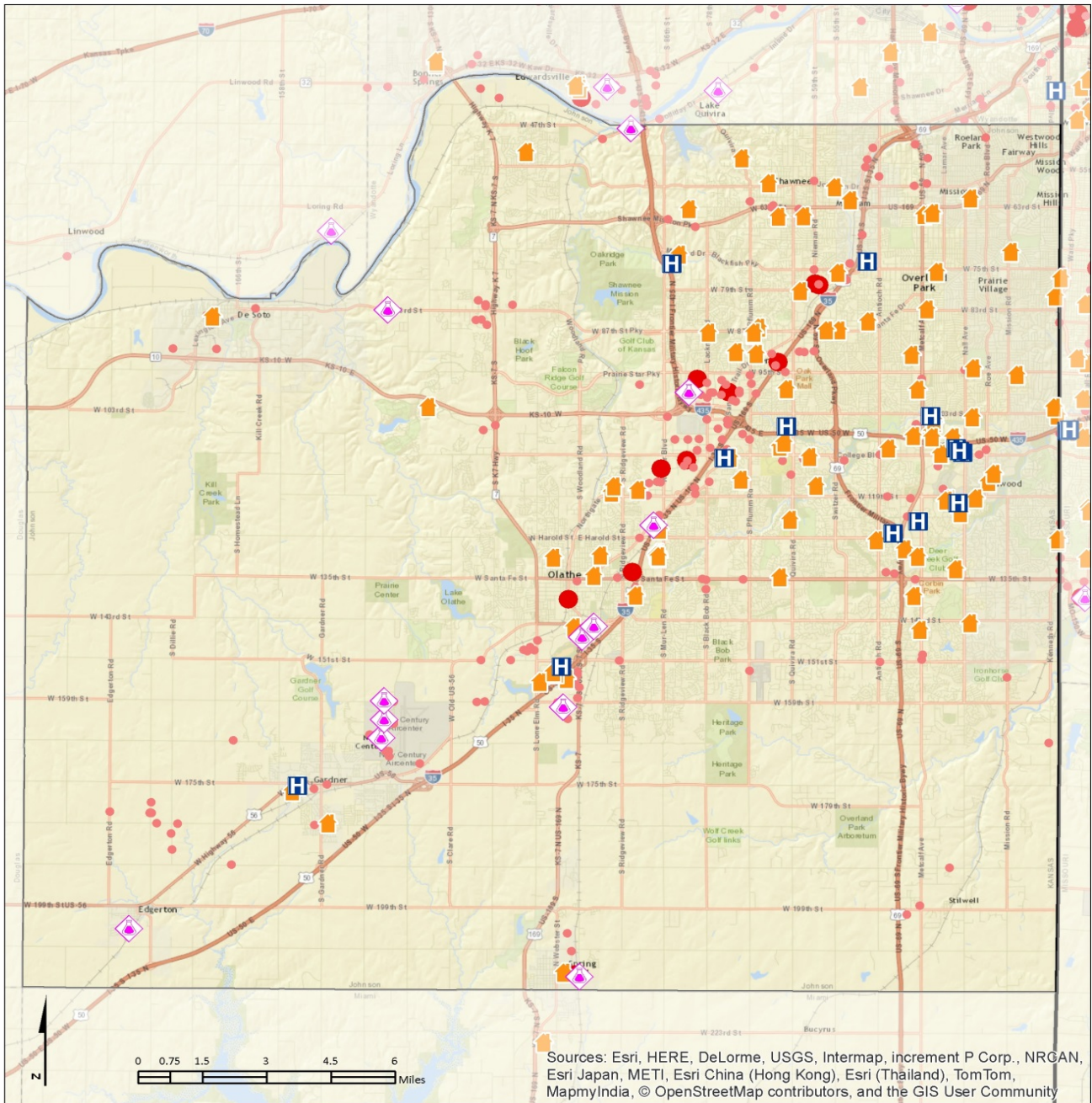
-  Dorms
-  Colleges
-  State boundary
-  Counties
-  RMP
-  Tier II : No EHS on site
-  Tier II : EHS on site



Note: The RMP facilities and Tier II facilities shown here are from reporting year 2014.

More information and data use policy available at www.marc.org/gis

Appendix A – Hazard Analysis Maps

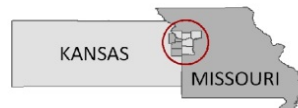


Tier II Hazards and Sensitive Populations

August 2015

Johnson County

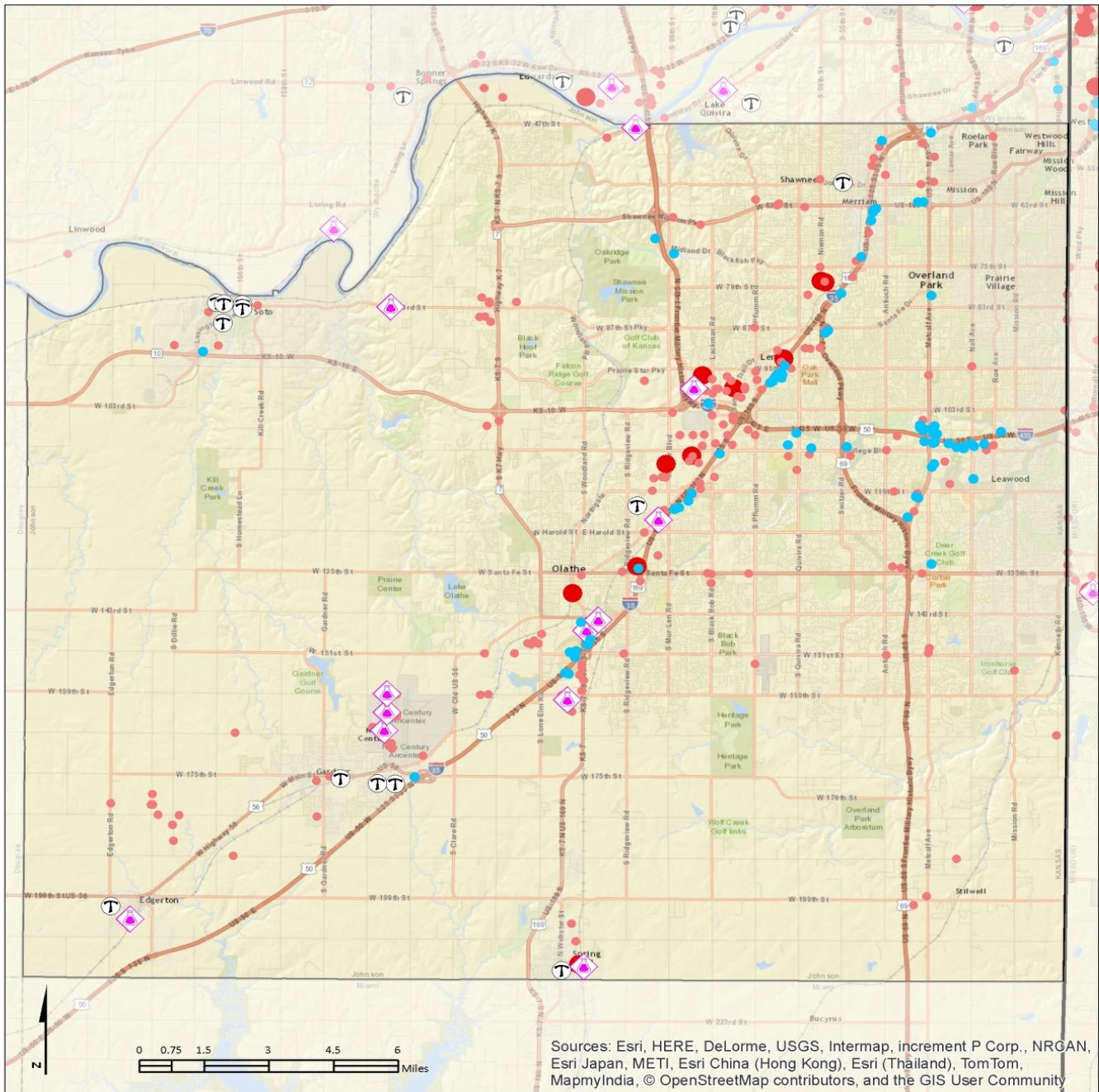
- Hospitals
- Nursing Homes
- RMP
- Tier II : No EHS on site
- Tier II : EHS on site
- State boundary
- Counties



Note: The RMP facilities and Tier II facilities shown here are from reporting year 2014.

More information and data use policy available at www.marc.org/gis

Appendix A – Hazard Analysis Maps

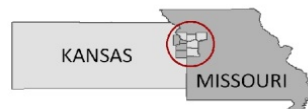


Tier II Hazards and Sensitive Populations

August 2015

Johnson County

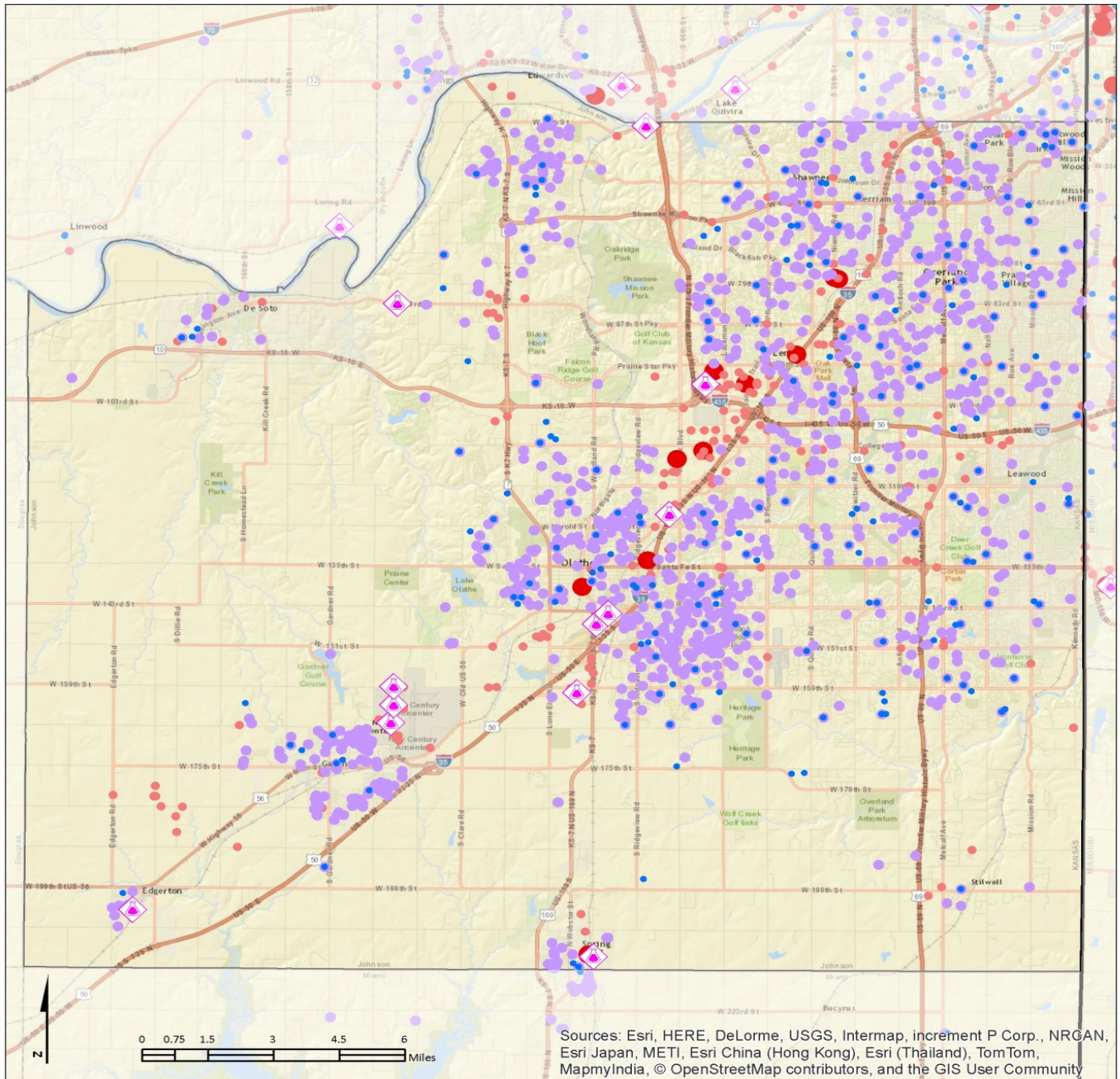
- Hotel
- Ⓣ Trailer Park
- State boundary
- Counties
- ◆ RMP
- Tier II : No EHS on site
- Tier II : EHS on site



Note: The RMP facilities and Tier II facilities shown here are from reporting year 2014.

More information and data use policy available at www.marc.org/gis

Appendix A – Hazard Analysis Maps



Tier II Hazards and Sensitive Populations

Johnson County

August 2015

- Schools
- Child Care
- State boundary
- Counties

- ◆ RMP
- Tier II : No EHS on site
- Tier II : EHS on site

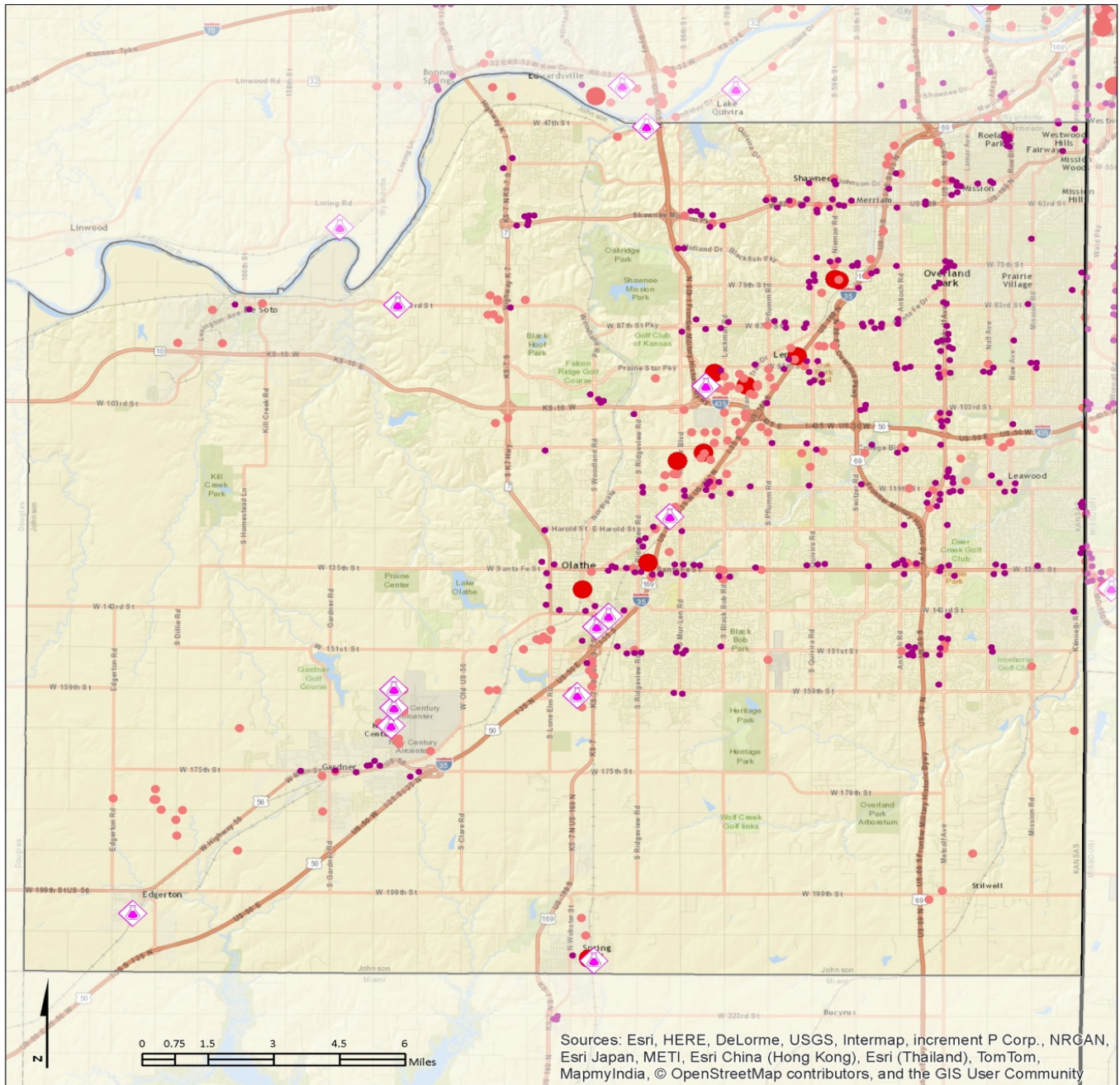
KANSAS MISSOURI

MARC
Mid-America Regional Council
Geographic Information Systems

Note: The RMP facilities and Tier II facilities shown here are from reporting year 2014.

More information and data use policy available at www.marc.org/gis

Appendix A – Hazard Analysis Maps



Tier II Hazards and Sensitive Populations Johnson County

August 2015

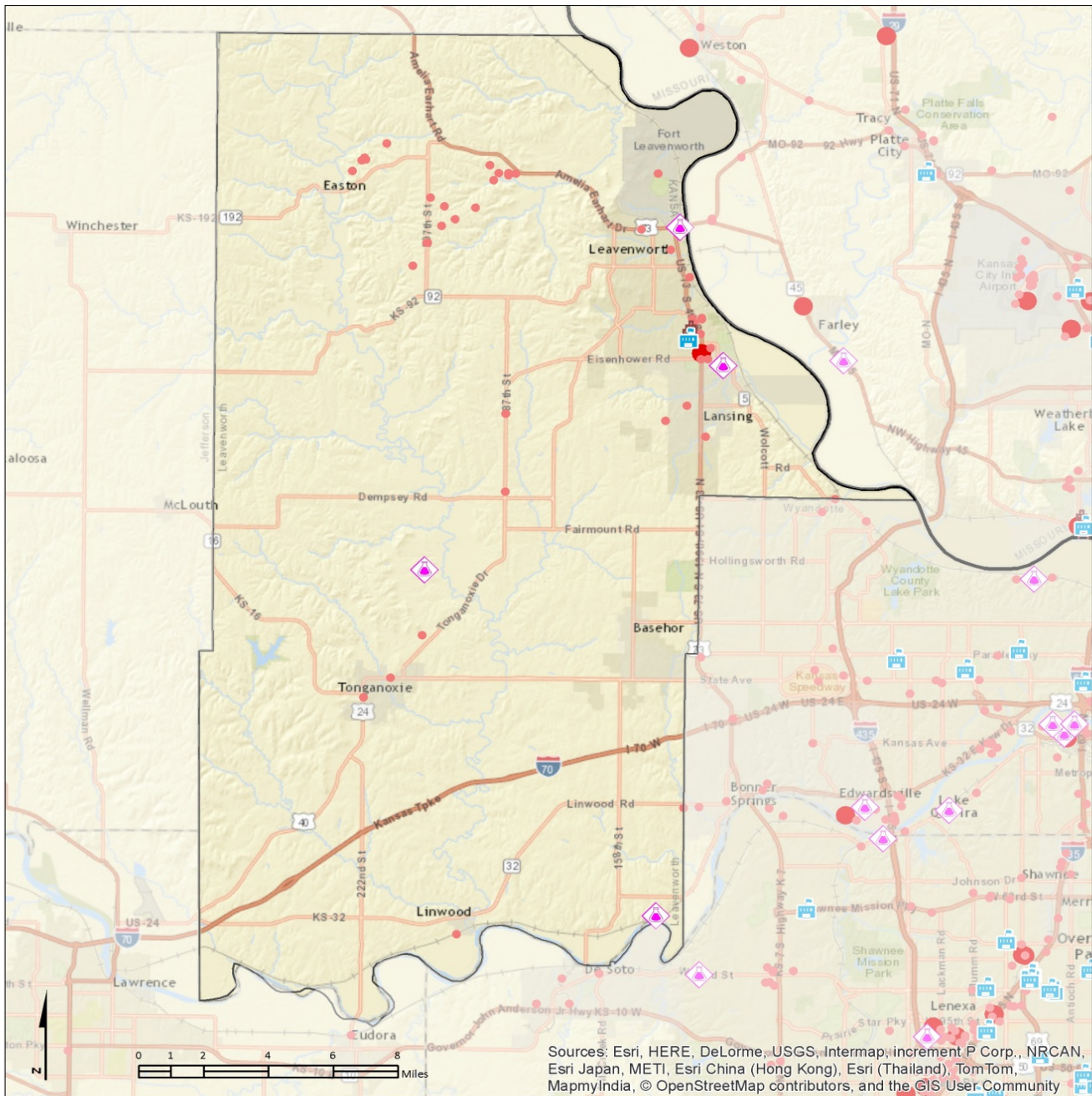


- Shopping Centers
- ◆ RMP
- State boundary
- Tier II : No EHS on site
- Counties
- Tier II : EHS on site

Note: The RMP facilities and Tier II facilities shown here are from reporting year 2014.

More information and data use policy available at www.marc.org/gis

Appendix A – Hazard Analysis Maps



Tier II Hazards and Sensitive Populations

August 2015

Leavenworth County

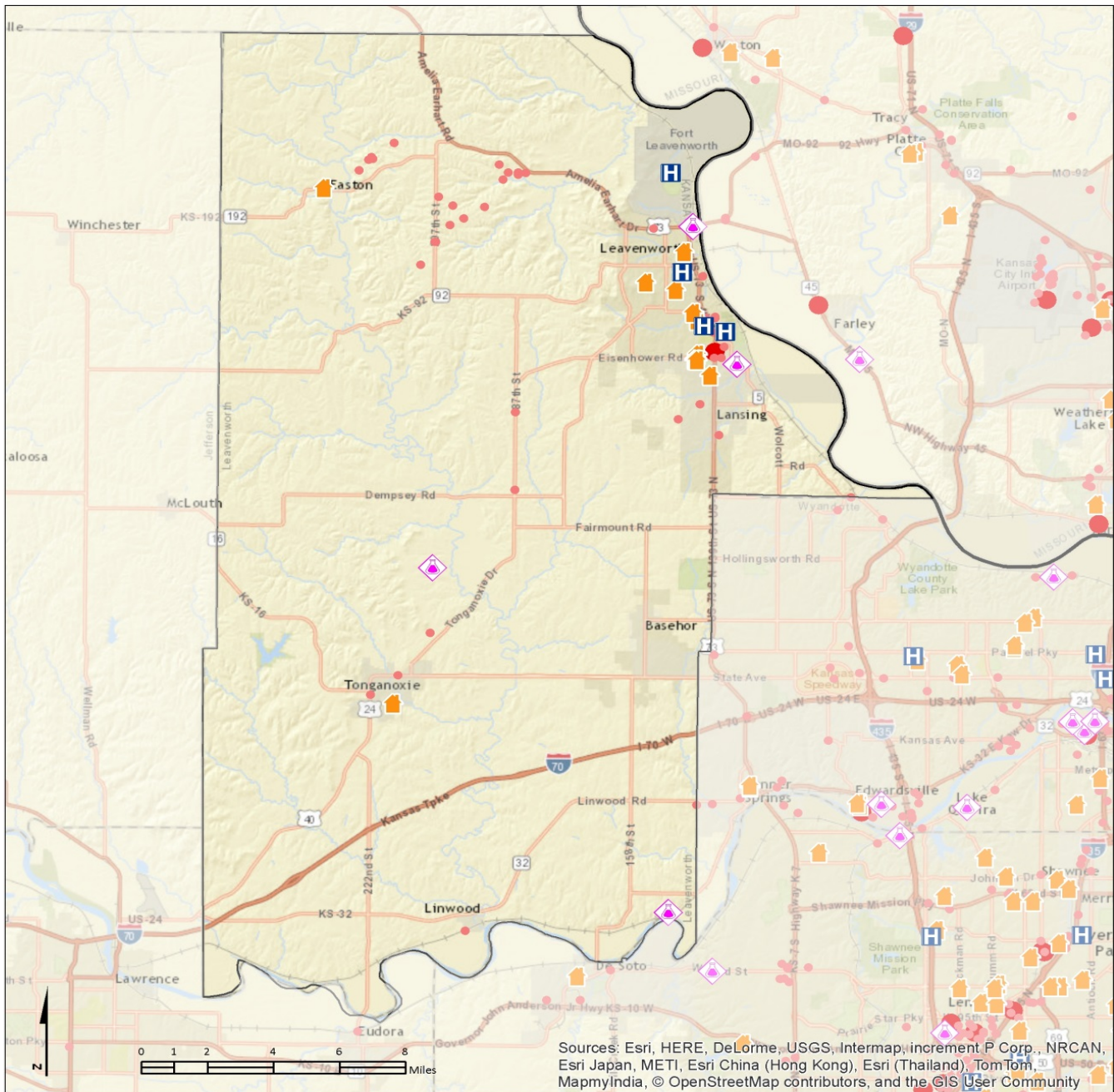
-  Dorms
-  Colleges
-  State boundary
-  Counties
-  RMP
-  Tier II : No EHS on site
-  Tier II : EHS on site



Note: The RMP facilities and Tier II facilities shown here are from reporting year 2014.

More information and data use policy available at www.marc.org/gis

Appendix A – Hazard Analysis Maps



Tier II Hazards and Sensitive Populations

August 2015

Leavenworth County

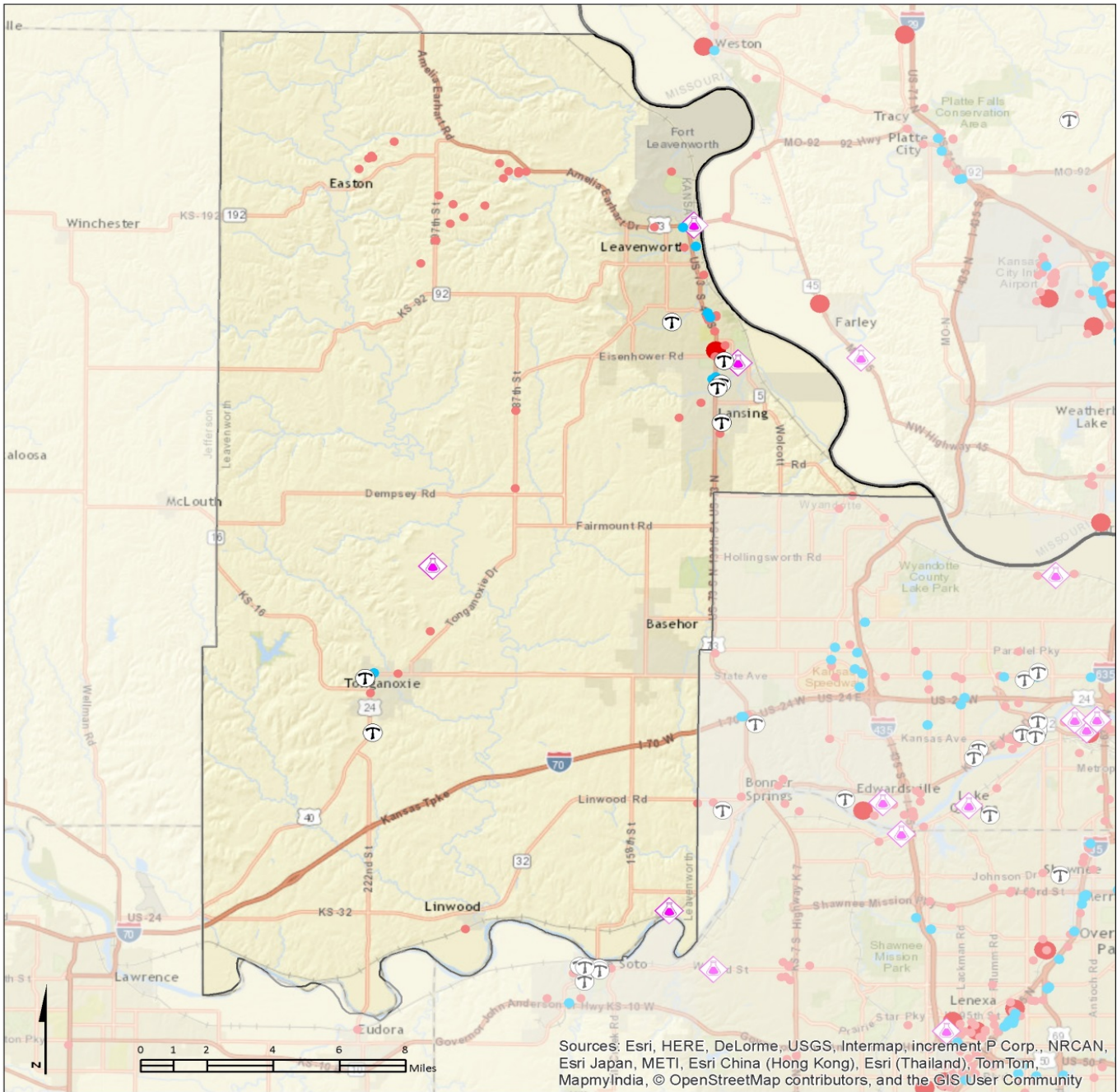
- Hospitals
- Nursing Homes
- State boundary
- Counties
- RMP
- Tier II : No EHS on site
- Tier II : EHS on site



Note: The RMP facilities and Tier II facilities shown here are from reporting year 2014.

More information and data use policy available at www.marc.org/gis

Appendix A – Hazard Analysis Maps



Tier II Hazards and Sensitive Populations

Leavenworth County

<ul style="list-style-type: none"> ● Hotel T Trailer Park State boundary Counties 	<ul style="list-style-type: none"> ◆ RMP ● Tier II : No EHS on site ● Tier II : EHS on site
--	--

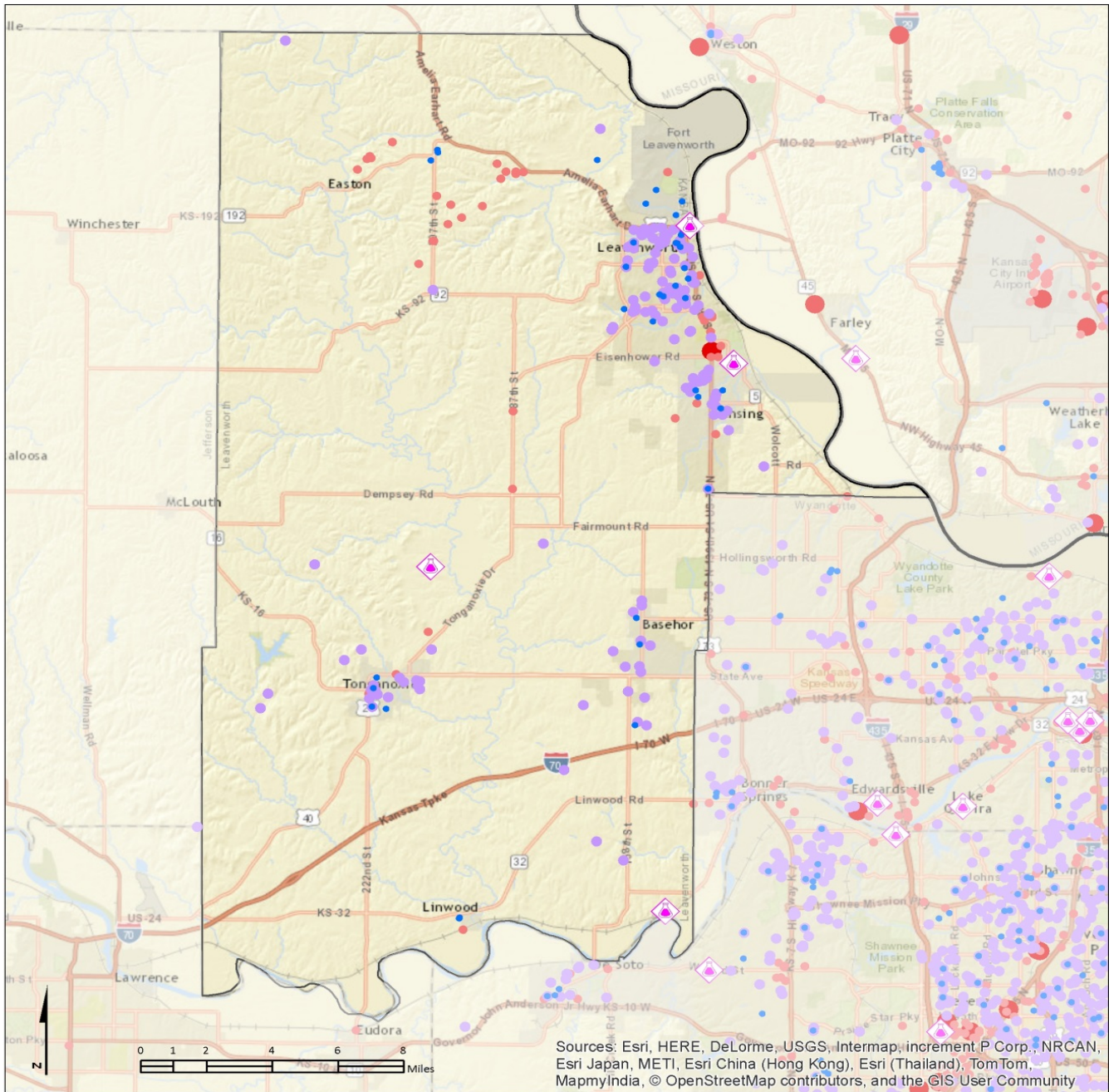
August 2015

MARC
Mid-America Regional Council
Geographic Information Systems

Note: The RMP facilities and Tier II facilities shown here are from reporting year 2014.

More information and data use policy available at www.marc.org/gis

Appendix A – Hazard Analysis Maps

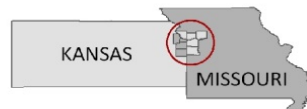


Tier II Hazards and Sensitive Populations

August 2015

Wyandotte County

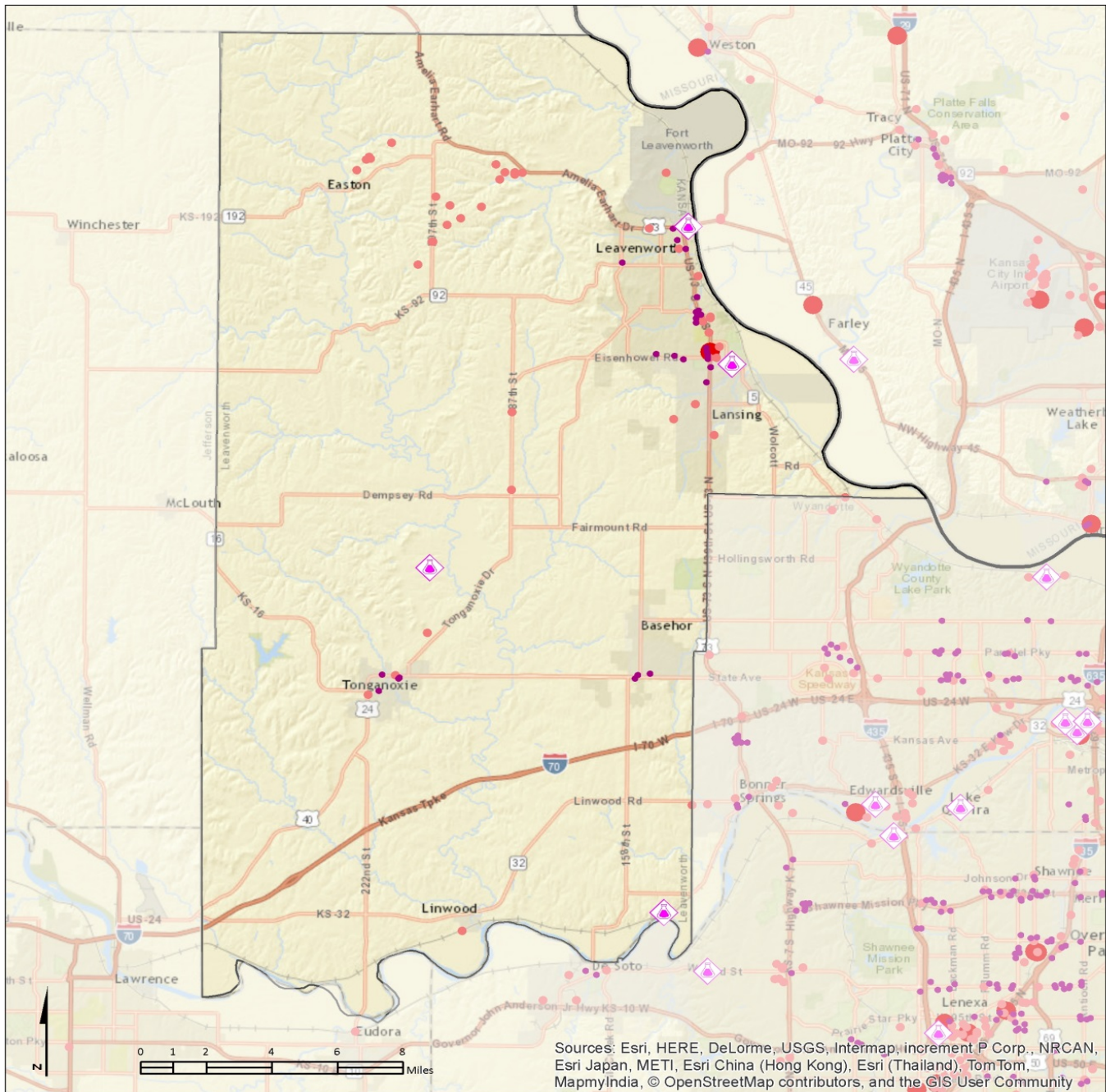
- Schools
- Child Care
- State boundary
- Counties
- ◆ RMP
- Tier II : No EHS on site
- Tier II : EHS on site



Note: The RMP facilities and Tier II facilities shown here are from reporting year 2014.

More information and data use policy available at www.marc.org/gis

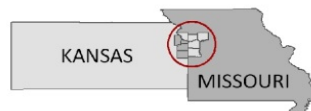
Appendix A – Hazard Analysis Maps



Tier II Hazards and Sensitive Populations

August 2015

Leavenworth County

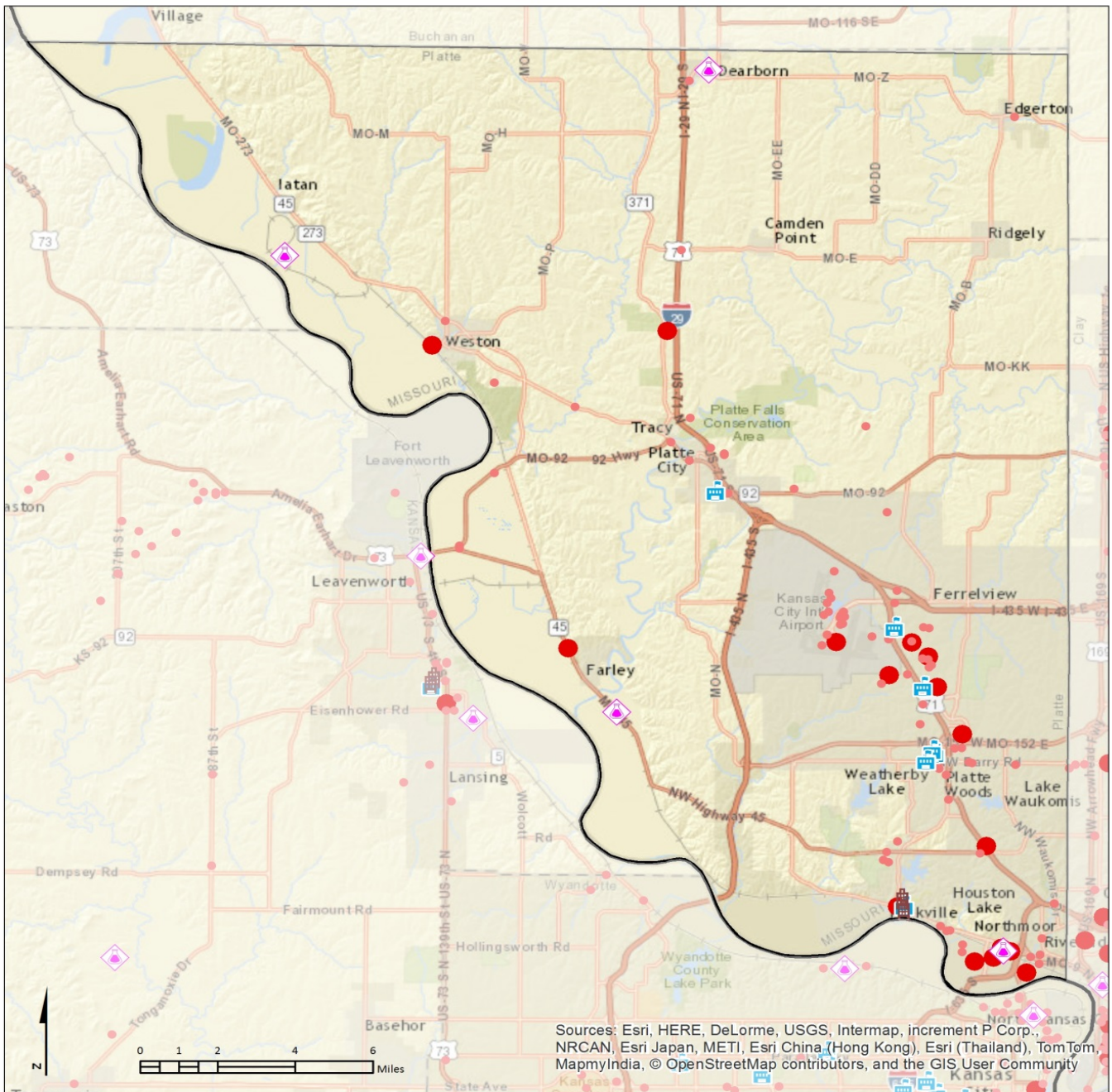


- Shopping Centers
- ◆ RMP
- State boundary
- Tier II : No EHS on site
- Counties
- Tier II : EHS on site

Note: The RMP facilities and Tier II facilities shown here are from reporting year 2014.

More information and data use policy available at www.marc.org/gis

Appendix A – Hazard Analysis Maps



Tier II Hazards and Sensitive Populations

August 2015

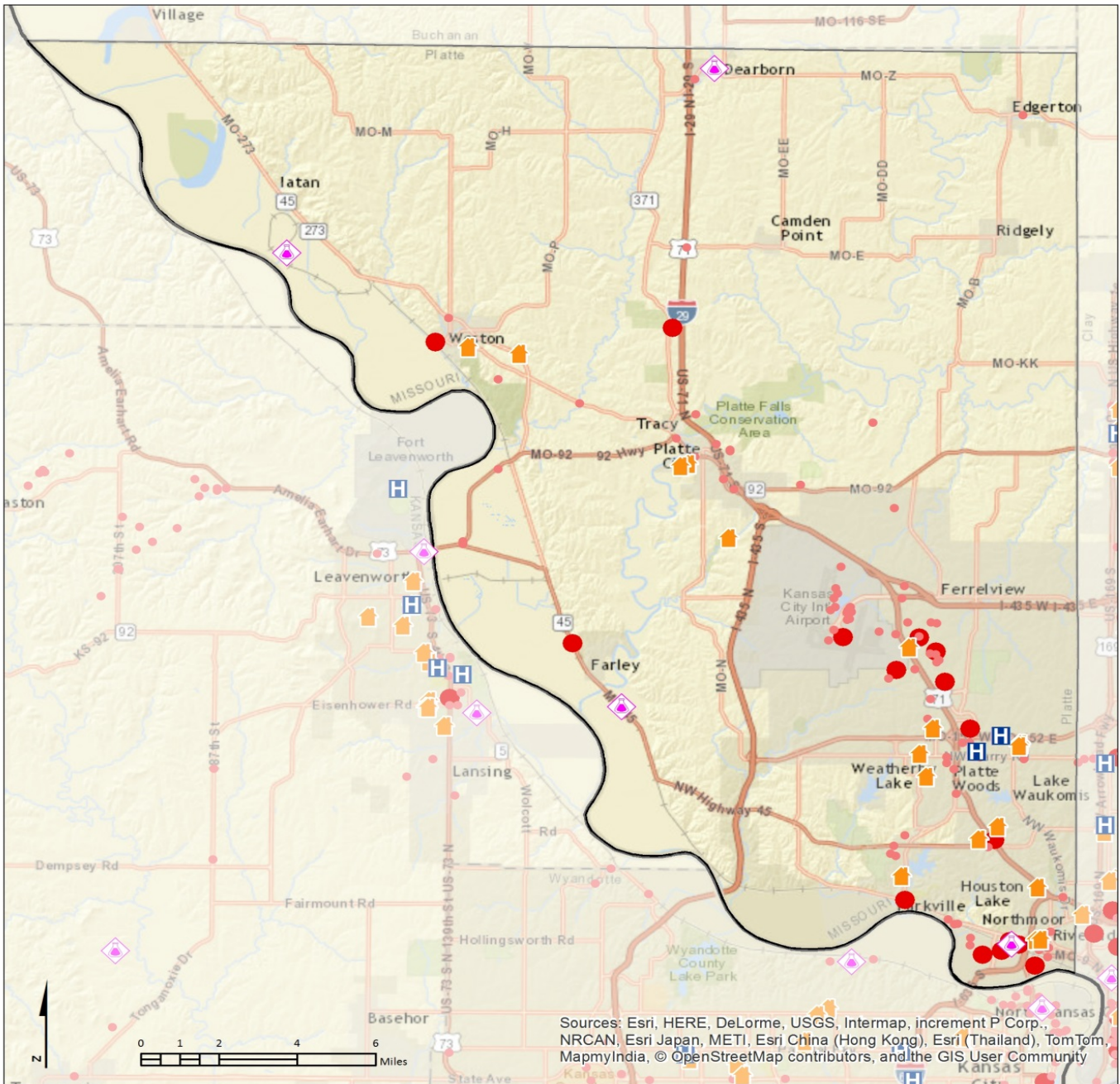
Platte County

- Dorms
- Colleges
- State boundary
- Counties
- RMP
- Tier II : No EHS on site
- Tier II : EHS on site



Note: The RMP facilities and Tier II facilities shown here are from reporting year 2014.

More information and data use policy available at www.marc.org/gis



Tier II Hazards and Sensitive Populations
 Platte County

August 2015

	Hospitals		RMP
	Nursing Homes		Tier II : No EHS on site
	State boundary		Tier II : EHS on site
	Counties		

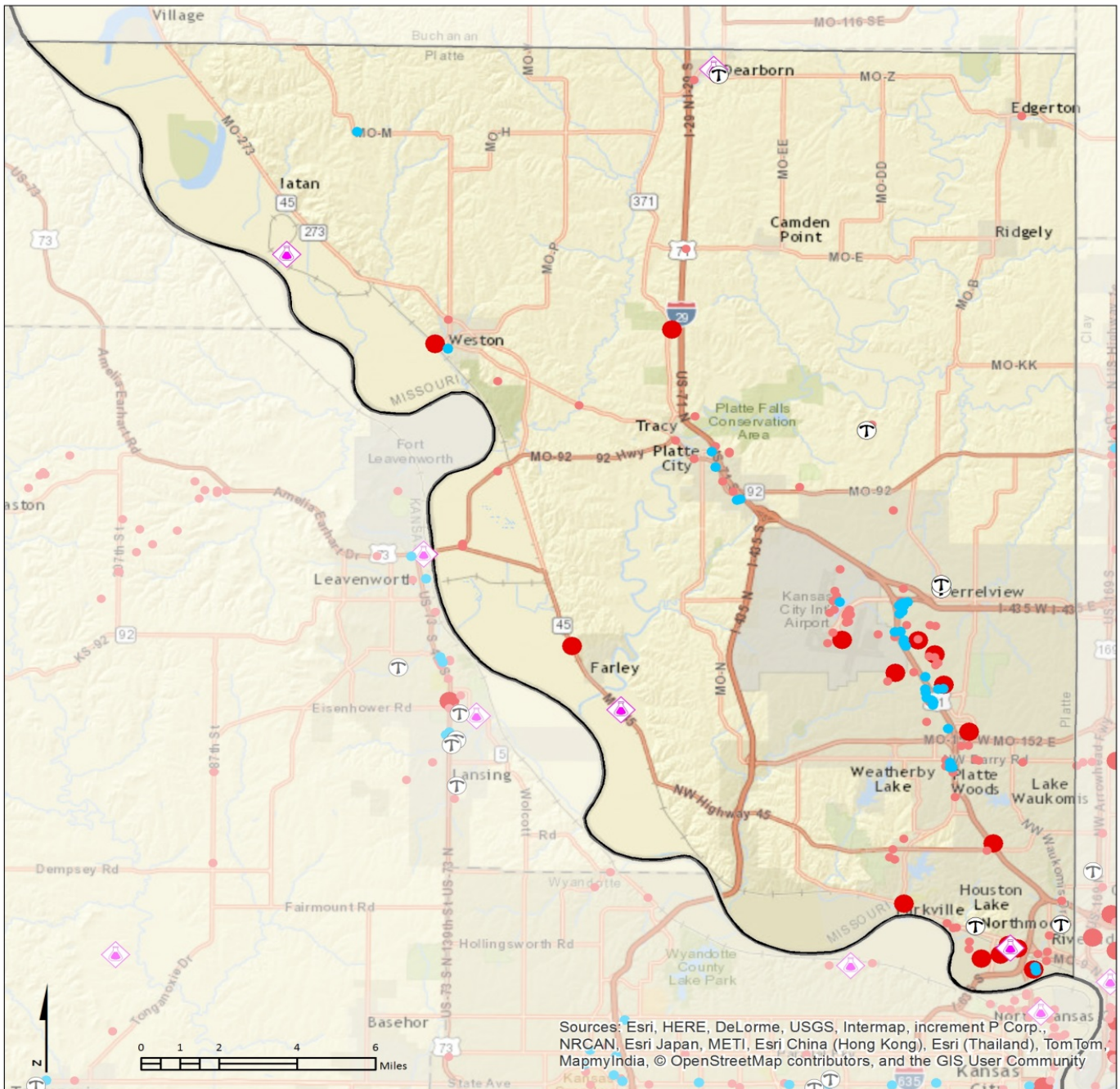
KANSAS MISSOURI

MARC
 Mid-America Regional Council
 Geographic Information Systems

Note: The RMP facilities and Tier II facilities shown here are from reporting year 2014.

More information and data use policy available at www.marc.org/gis

Appendix A – Hazard Analysis Maps



Tier II Hazards and Sensitive Populations Platte County

August 2015

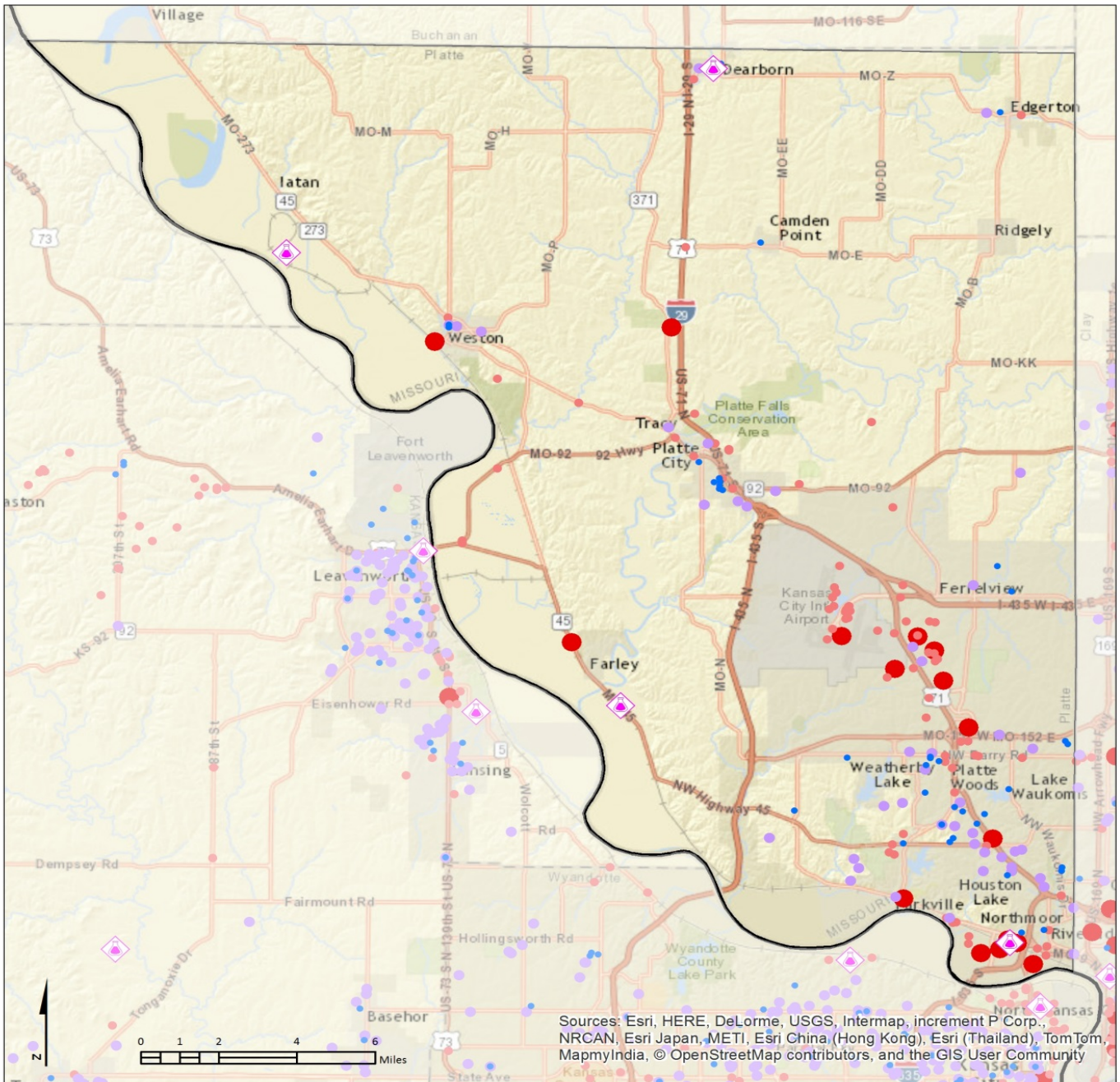
MARC
Mid-America Regional Council
Geographic Information Systems

Note: The RMP facilities and Tier II facilities shown here are from reporting year 2014.

More information and data use policy available at www.marc.org/gis

● Hotel	◆ RMP
T Trailer Park	● Tier II : No EHS on site
 State boundary	● Tier II : EHS on site
 Counties	

Appendix A – Hazard Analysis Maps



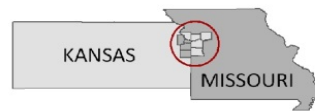
Sources: Esri, HERE, DeLorme, USGS, Intermap, increment P Corp., NRCAN, Esri Japan, METI, Esri China (Hong Kong), Esri (Thailand), TomTom, MapmyIndia, © OpenStreetMap contributors, and the GIS User Community

Tier II Hazards and Sensitive Populations

August 2015

Platte County

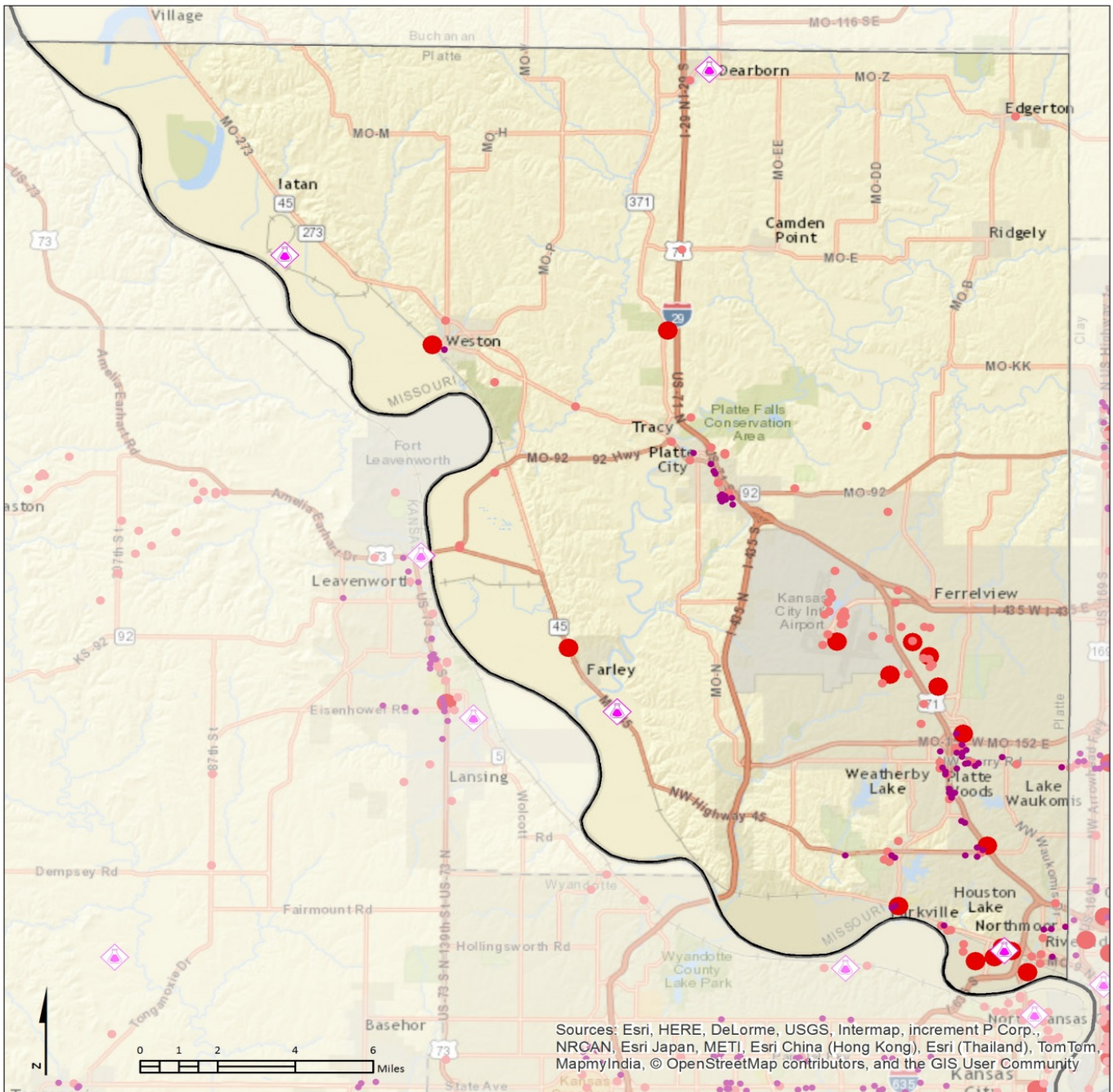
- Child Care
- Schools
- State boundary
- Counties
- RMP
- Tier II : No EHS on site
- Tier II : EHS on site



Note: The RMP facilities and Tier II facilities shown here are from reporting year 2014.

More information and data use policy available at www.marc.org/gis

Appendix A – Hazard Analysis Maps



Tier II Hazards and Sensitive Populations Platte County

August 2015

- Shopping Centers
- Counties

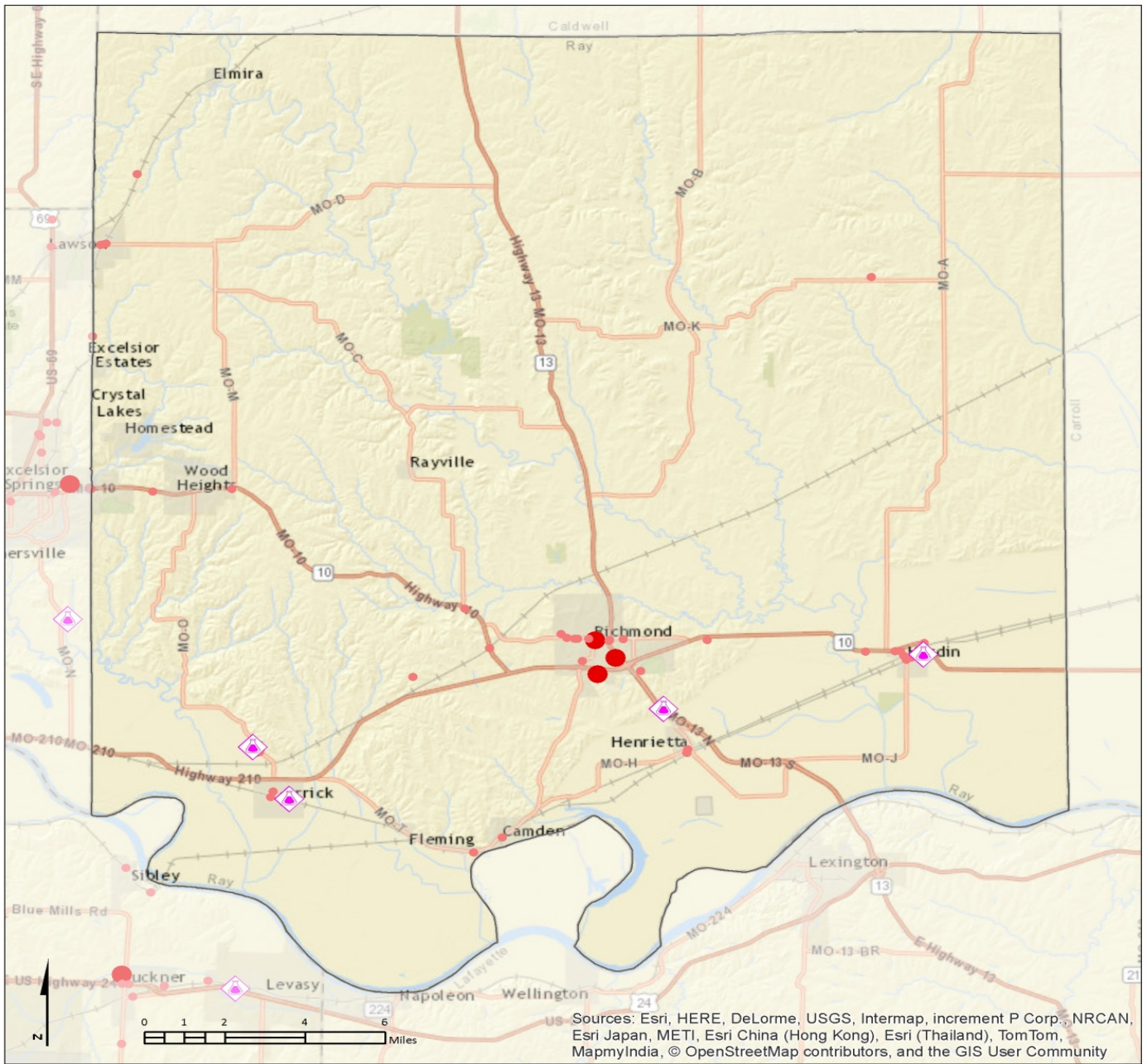
- RMP
- Tier II : No EHS on site
- Tier II : EHS on site

KANSAS MISSOURI

MARC
Mid-America Regional Council
Geographic Information Systems

Note: The RMP facilities and Tier II facilities shown here are from reporting year 2014.
More information and data use policy available at www.marc.org/gis

Appendix A – Hazard Analysis Maps



Tier II Hazards and Sensitive Populations

August 2015

Ray County

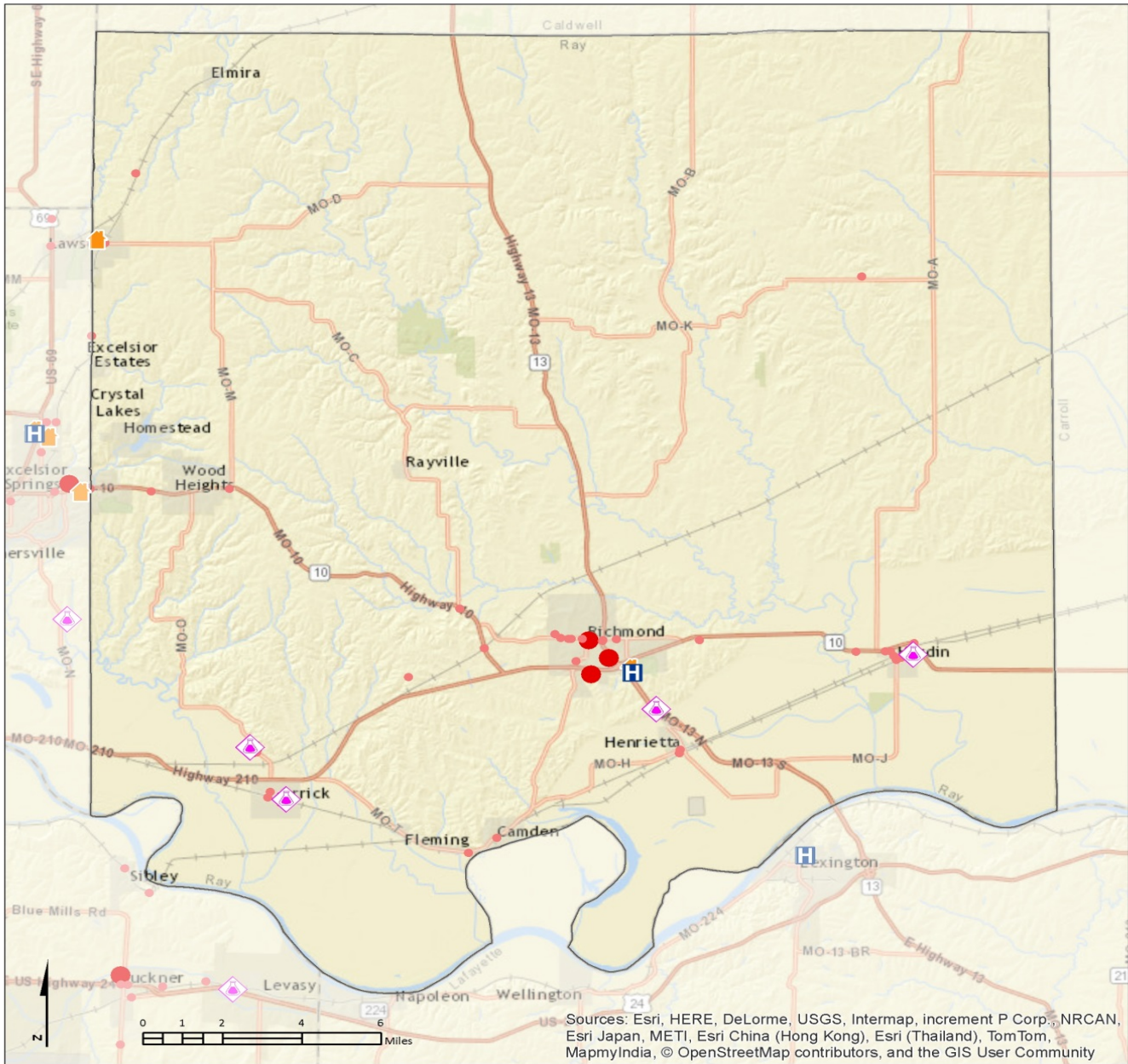


-  Dorms
-  Colleges
-  Counties
-  RMP
-  Tier II : No EHS on site
-  Tier II : EHS on site

Note: The RMP facilities and Tier II facilities shown here are from reporting year 2014.

More information and data use policy available at www.marc.org/gis

Ray County Colleges and Dorms

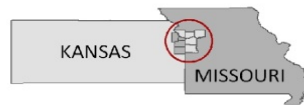


Tier II Hazards and Sensitive Populations

Ray County

August 2015

- Hospitals
- Nursing Homes
- Counties
- RMP
- Tier II : No EHS on site

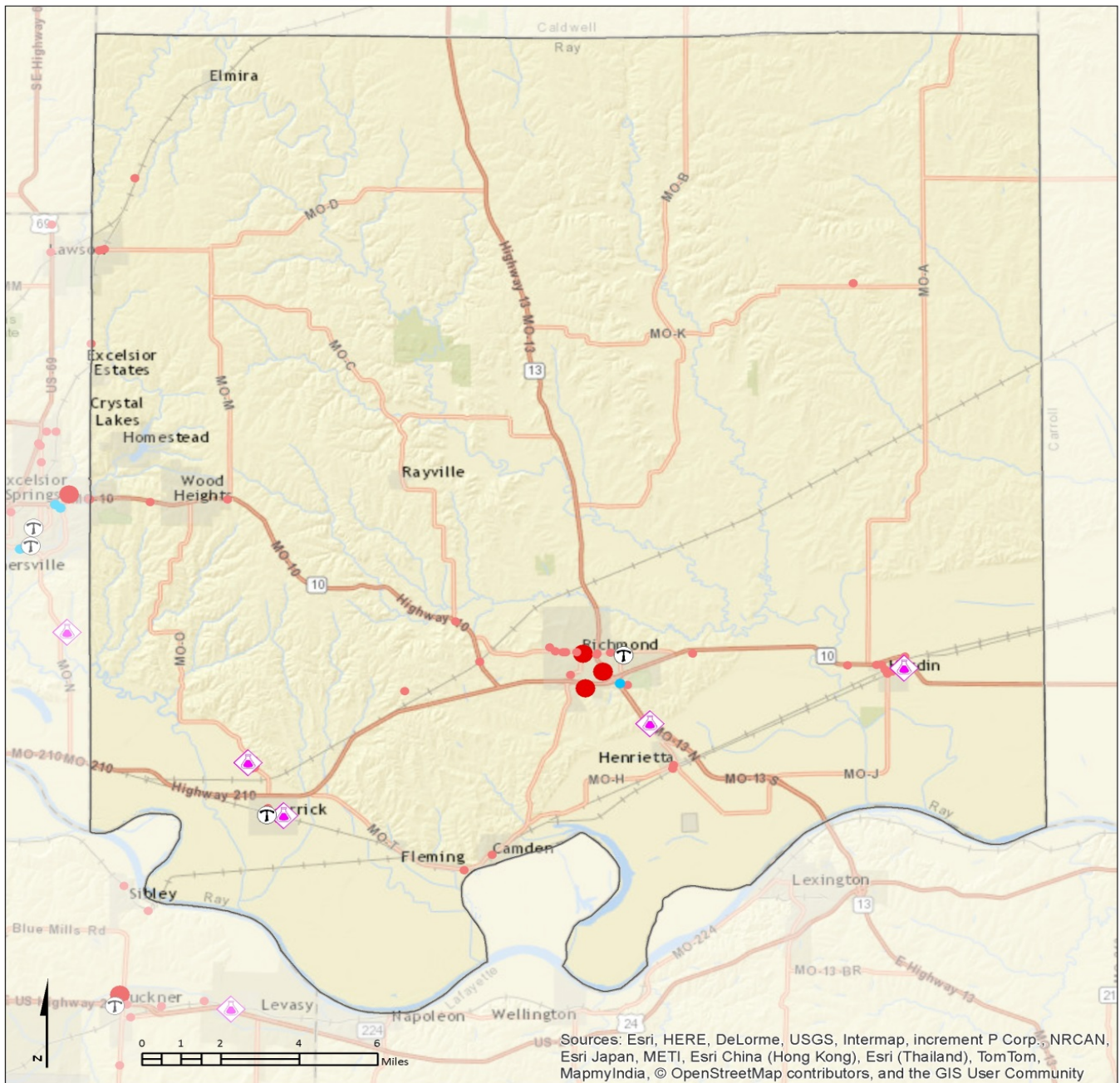


Note: The RMP facilities and Tier II facilities shown here are from reporting year 2014.

Ray County Hospitals and Nursing Homes

available at www.marc.org/gis

Appendix A – Hazard Analysis Maps



Tier II Hazards and Sensitive Populations

August 2015

Ray County

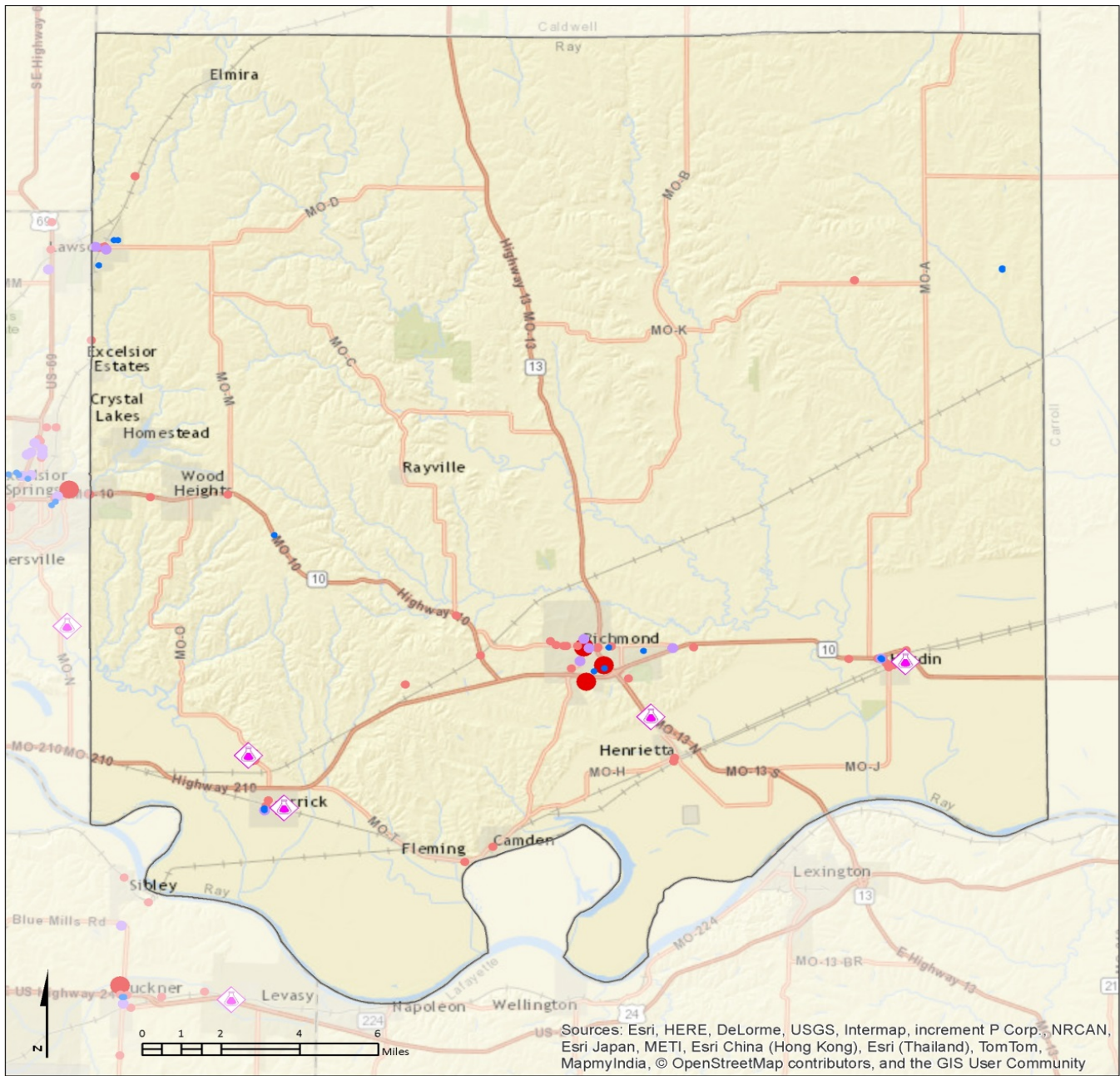


- Hotel
- Ⓣ Trailer Park
- Counties
- ◆ RMP
- Tier II : No EHS on site
- Tier II : EHS on site

Note: The RMP facilities and Tier II facilities shown here are from reporting year 2014.

More information and data use policy available at www.marc.org/gis

Appendix A – Hazard Analysis Maps

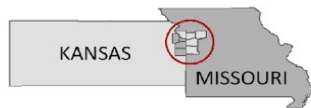


Sources: Esri, HERE, DeLorme, USGS, Intermap, increment P Corp., NRCAN, Esri Japan, METI, Esri China (Hong Kong), Esri (Thailand), TomTom, MapmyIndia, © OpenStreetMap contributors, and the GIS User Community

Tier II Hazards and Sensitive Populations

August 2015

Ray County



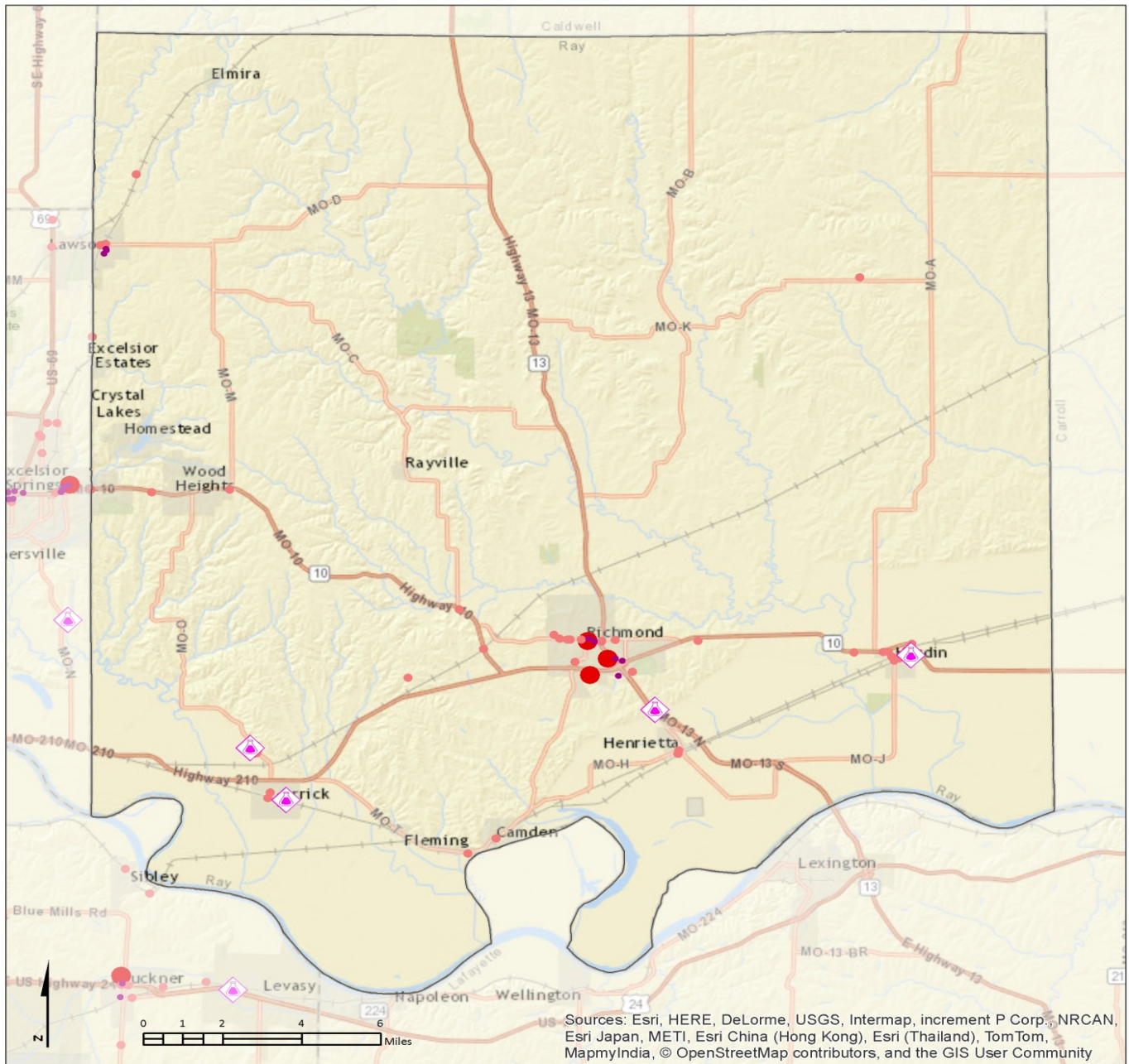
- Child Care
- Schools
- Counties
- ◆ RMP
- Tier II : No EHS on site
- Tier II : EHS on site

Note: The RMP facilities and Tier II facilities shown here are from reporting year 2014.

More information and data use policy available at www.marc.org/gis

Ray County Schools and Child Care Facilities

Appendix A – Hazard Analysis Maps



Tier II Hazards and Sensitive Populations

August 2015

Ray County



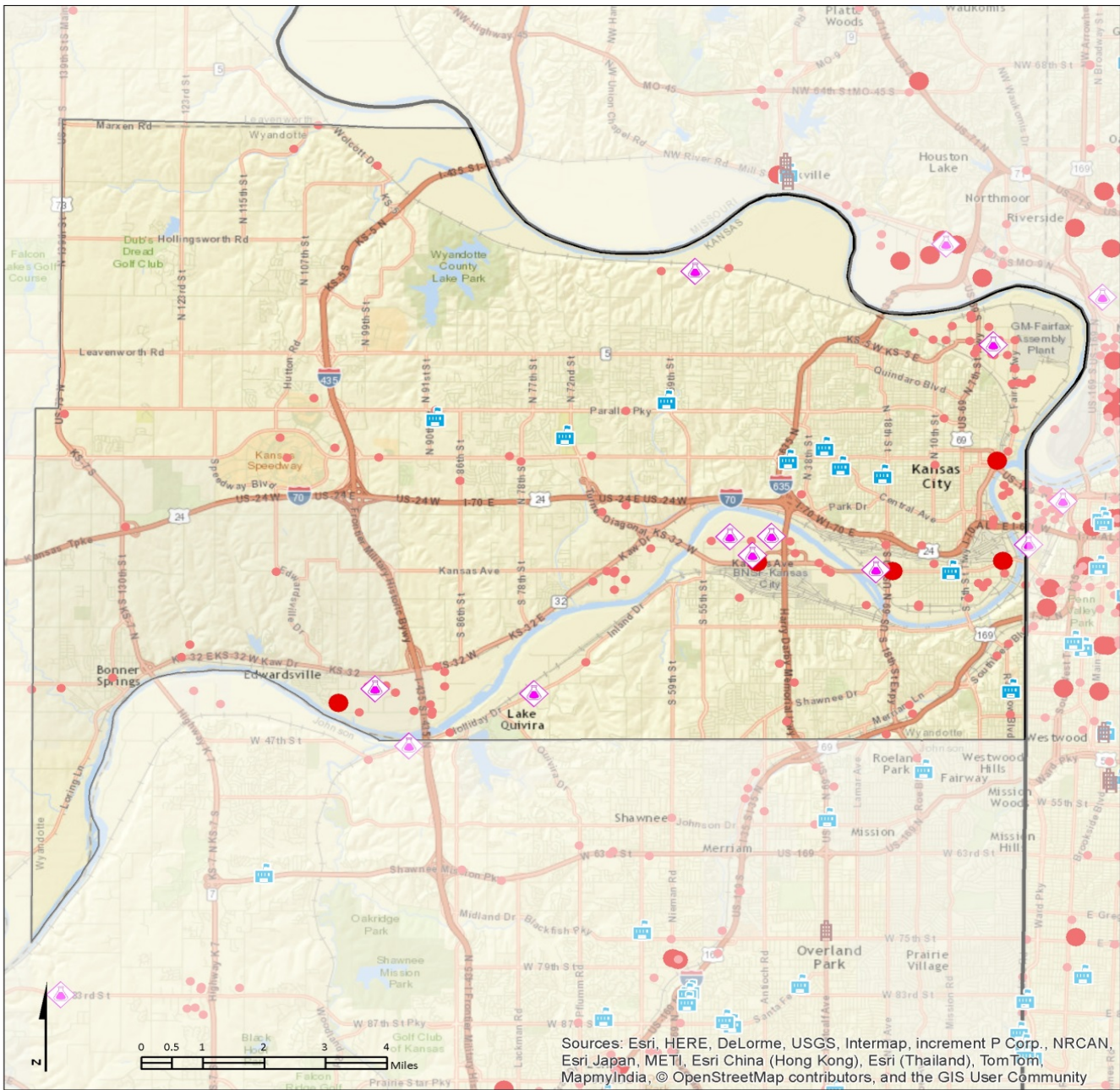
- Shopping Centers
- ◇ RMP
- Counties
- Tier II : No EHS on site
- Tier II : EHS on site

Note: The RMP facilities and Tier II facilities shown here are from reporting year 2014.

More information and data use policy available at www.marc.org/gis

Ray County Shopping Centers

Appendix A – Hazard Analysis Maps



Tier II Hazards and Sensitive Populations

August 2015

Wyandotte County

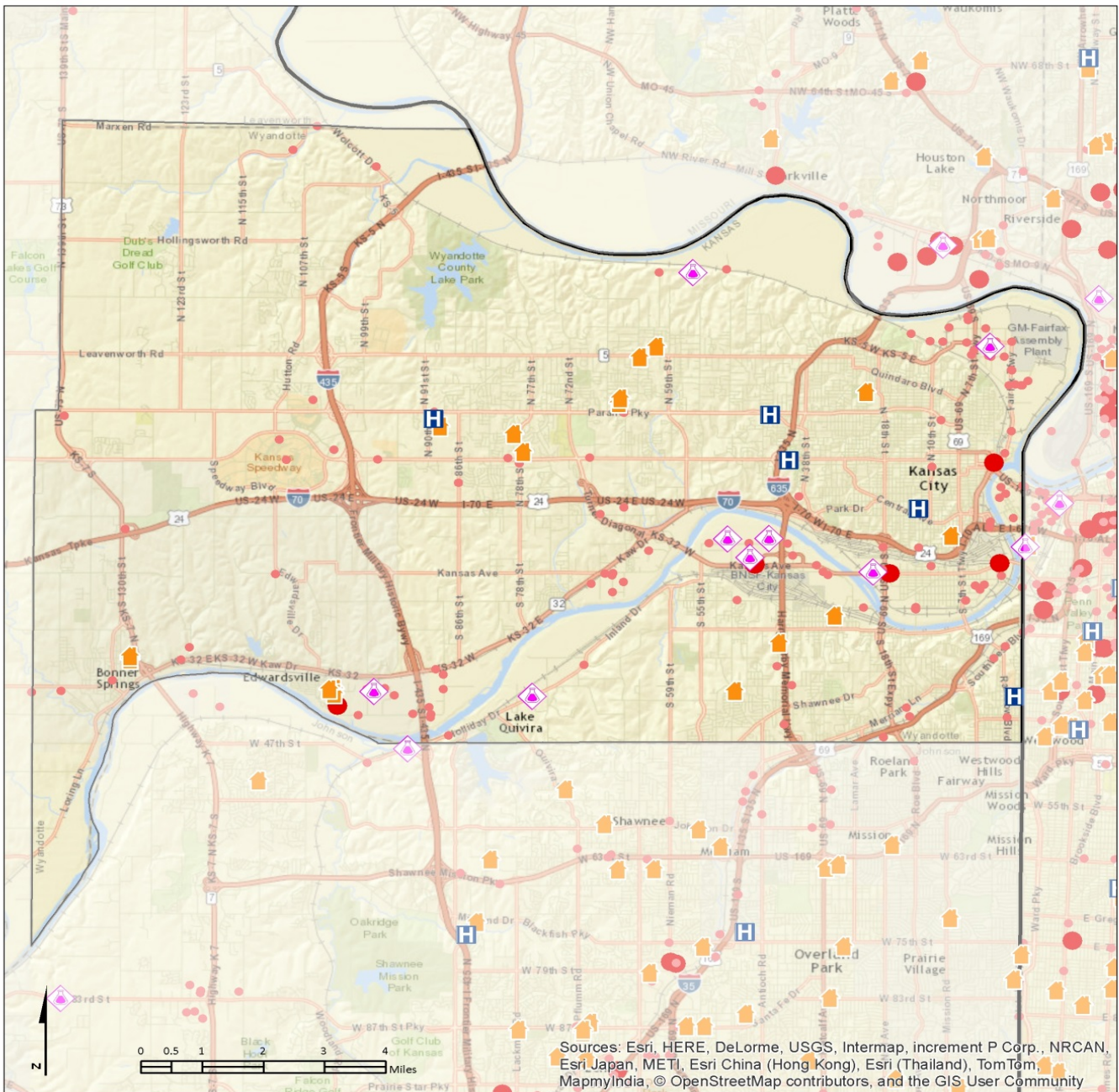
- Dorms
- Colleges
- State boundary
- Counties
- RMP
- Tier II : No EHS on site
- Tier II : EHS on site



Note: The RMP facilities and Tier II facilities shown here are from reporting year 2014.

More information and data use policy available at www.marc.org/gis

Appendix A – Hazard Analysis Maps

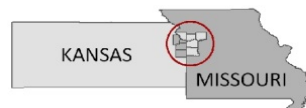


Tier II Hazards and Sensitive Populations

August 2015

Wyandotte County

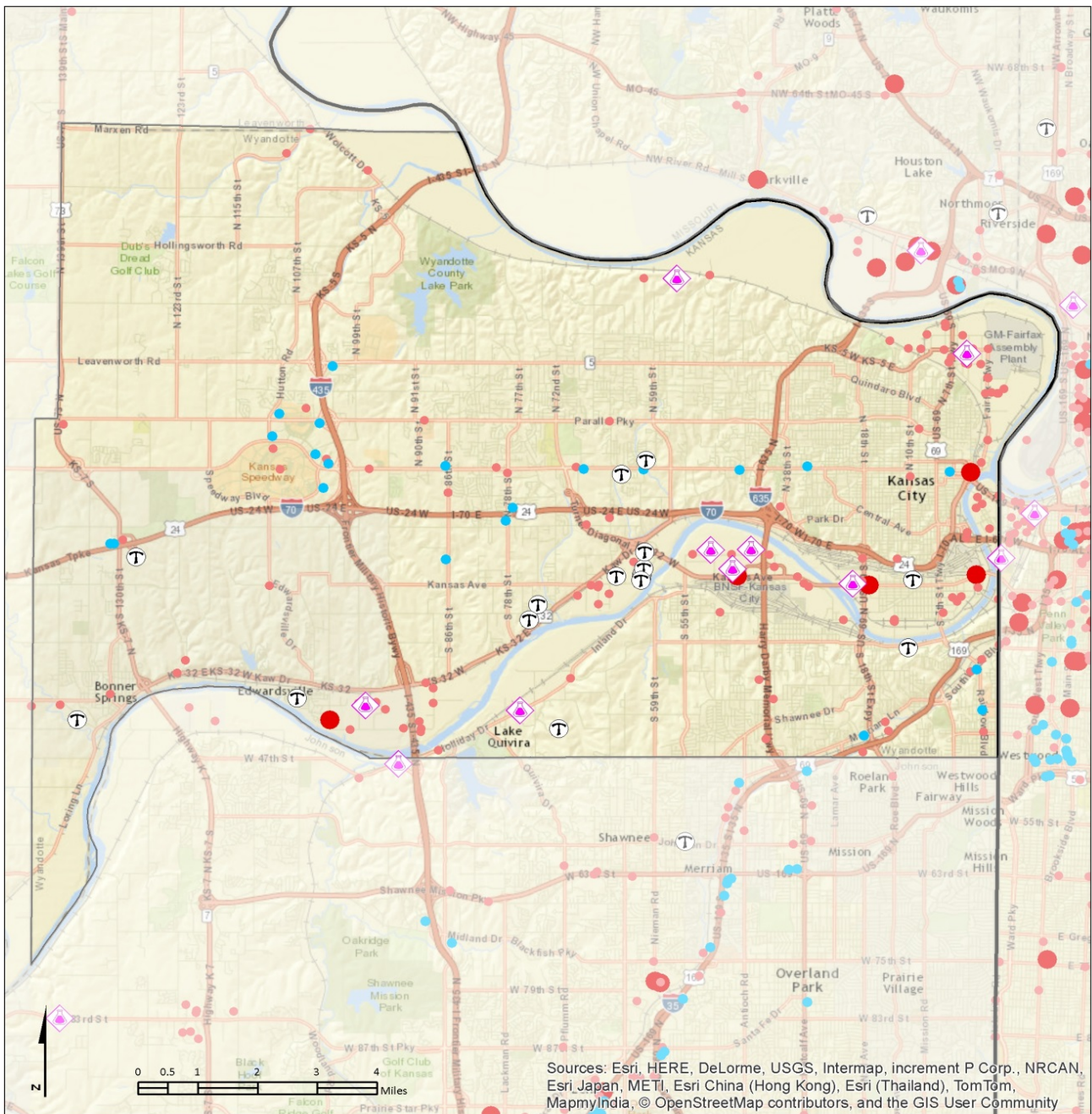
-  Hospitals
-  Nursing Homes
-  State boundary
-  Counties
-  RMP
-  Tier II : No EHS on site
-  Tier II : EHS on site



Note: The RMP facilities and Tier II facilities shown here are from reporting year 2014.

More information and data use policy available at www.marc.org/gis

Appendix A – Hazard Analysis Maps

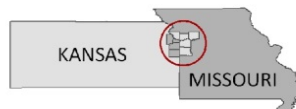


Tier II Hazards and Sensitive Populations

August 2015

Wyandotte County

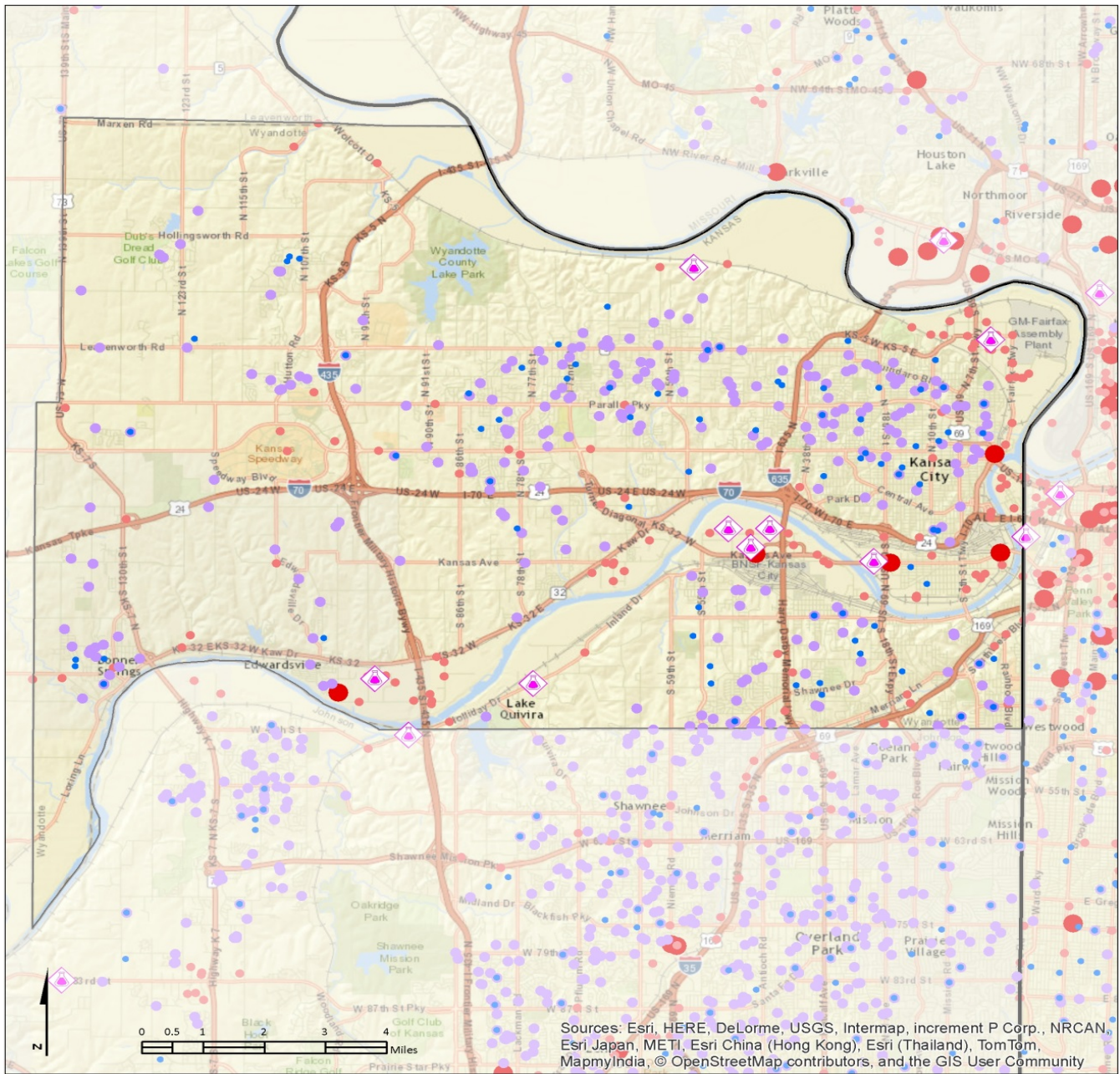
- Hotel
- ◆ RMP
- T Trailer Park
- Tier II : No EHS on site
- State boundary
- Tier II : EHS on site
- Counties



Note: The RMP facilities and Tier II facilities shown here are from reporting year 2014.

More information and data use policy available at www.marc.org/gis

Appendix A – Hazard Analysis Maps



Tier II Hazards and Sensitive Populations
 Wyandotte County

August 2015

- Schools
- Child Care
- State boundary
- Counties
- ◆ RMP
- Tier II : No EHS on site
- Tier II : EHS on site

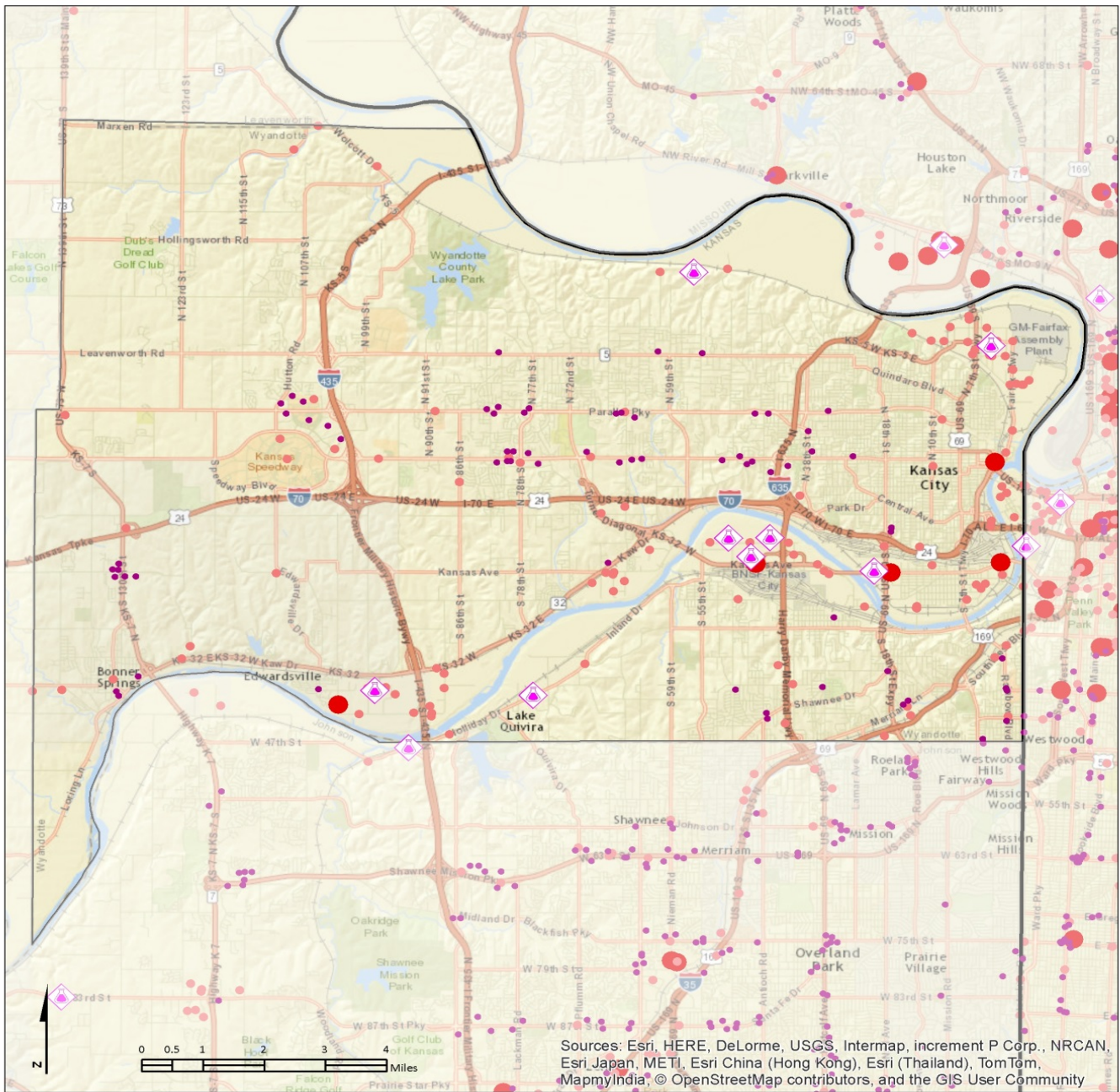
MARC
 Mid-America Regional Council
 Geographic Information Systems

Note: The RMP facilities and Tier II facilities shown here are from reporting year 2014.

More information and data use policy available at www.marc.org/gis

Wyandotte County Schools and Child Care Facilities

Appendix A – Hazard Analysis Maps



Tier II Hazards and Sensitive Populations
Wyandotte County

August 2015

- Shopping Centers
- ◆ RMP
- State boundary
- Tier II : No EHS on site
- Counties
- Tier II : EHS on site



Note: The RMP facilities and Tier II facilities shown here are from reporting year 2014.

More information and data use policy available at www.marc.org/gis